

SURVEY & REMONUMENTATION

MAY 28 1997

COMMISSION

LAND CORNER RECORDATION CERTIFICATE
Filing Requirement of Act 74, Mich. P.A. 1970

RECORDED FILED

13-

For corners in

LIVINGSTON
(County)

Located In:

Corner Code #

- | | | |
|------------------------------------|-------------------------------------|-------------|
| 1. Public Land Survey | T <u>3</u> N <u>R</u> G <u>6</u> E | <u>I-08</u> |
| | T <u> </u> R <u> </u> | <u> </u> |
| | T <u> </u> R <u> </u> | <u> </u> |
| | T <u> </u> R <u> </u> | <u> </u> |
| 2. Property Controlling in Section | S <u> </u> T <u> </u> R <u> </u> | <u> </u> |
| | S <u> </u> T <u> </u> R <u> </u> | <u> </u> |
| 3. Miscellaneous Property in Sec. | S <u> </u> T <u> </u> R <u> </u> | <u> </u> |
| | S <u> </u> T <u> </u> R <u> </u> | <u> </u> |

1996 DEC 19 A 11:36

NANCY HAVILAND
REGISTER OF DEEDS
LIVINGSTON COUNTY, MI.
48843

L.S.C. #645m

Register of Deeds Stamp & File Number

4. Lot No. _____, Recorded Plat _____
5. Private Claims _____

I, JACK K. SMITH in a field survey on 12/17, 1996 do hereby state that under requirements of P.A. 74, Michigan P.A. of 1970, the corner points mentioned in lines 1 and 2 above were in conformance with regulations and rules therefore as required in the current manual of survey instructions of the United States Department of the Interior, Bureau of Land Management or by a decree of a Court of Law and/or that the corner points mentioned in lines 3, 4 and 5 above were in conformance with the rules of the Michigan Board of Land Surveyors or by a Decree of a Court of Law; established, re-established, monumented, recovered, found as expressed below:

NOTE: Not more than 2 corners, all in the same town and range, may be recorded on this certificate.

	A	B	C	D	E	F	G	H	I	J	K	L	M
1													
2	6		5		4		3		2		1		
3													
4	7		8		9		10		11		12		
5													
6	18		17		16		15		14		13		
7													
8	19		20		21		22		23		24		
9													
10	30		29		28		27		26		25		
11													
12	31		32		33		34		35		36		
13													

A. Description of original monument and accessories and/or subsequent restoration:

I-08 The West 1/4 Corner of Section 23, Hartland Township was set by the GLO in 1823 by S. Sibley.

The original witnesses are:

- | | | |
|-----------|-----------|----------------|
| B Oak 28" | S28°W | 56 lks (37.0') |
| W Oak 6" | N01 1/2°E | 33 lks (21.8') |

NOTE: NONE OF THE ORIGINAL WITNESSES COULD BE FOUND OR PERPETUATED SEE THE BACK OF THIS SHEET FOR ADDITIONAL HISTORICAL DATA.

B. Description of corner evidence found and/or method applied in restoring or reestablishing corner:

I-08 SEE THE BACK OF THIS SHEET

NOTE: this corner falls in the front yard of a home on Lot 106 of Hartland Country Club Subdivision No. 2. The owner of the home does not want a corner placed or surveyors occupying a point in his yard. Therefor a rerod was set flush with the surface at I-08 and reference monuments were set on the edges of Countryside Drive. Nails and spotters were not set in trees since they are in residential yards.

C. Description of monument for corner and accessories established to perpetuate locating the position of the corner:

I-08 West 1/4 Corner, Section 23, T3N, R6E, set 1/2" rerod and 2 Reference Corners (36" x 1 1/4" iron pipe with brass cap marked "Livingston Co. Remonumentation Witness") - See sketch on back -

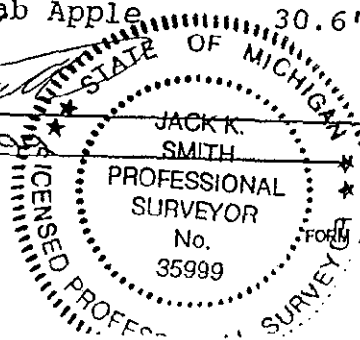
I-08 Set Rerod

- | | | |
|-------|--------------------------|--------|
| N85°E | 12" Maple | 33.8' |
| N45°E | SW Cor Garage Hse #12065 | 36.62' |
| N80°E | 10" Maple | 79.6' |
| N30°E | 4" Multi Crab Apple | 30.6' |

PA. 345 1990, APPROVED BY LIVINGSTON COUNTY
PEER GROUP ON 9-18-1996 CO. REP JED

Signed by [Signature]
Surveyor's Michigan License No. 35999

Date DECEMBER 17, 1996



April 12, 1996
 Revised July 19, 1996

I-08 T3N - R6E: WEST 1/4 CORNER, SECTION 23, HARTLAND TOWNSHIP

The corner was originally recorded as being set by S. Sibley in 1823. I could find no further record of use of this corner. The corner falls in the front yard of a lot in the plat of "Hartland Country Club Subdivision". The subdivision calls for the easterly boundary of the plat to be the East line of the Section. Found monumentation for the plat works well to form a line which projected to I-08 falls about 7 feet westerly of line between I-07 and I-09.

ADDITIONAL INFORMATION:

It was recommended by the Peer Group that we investigate the occupation and monumentation along the East-West 1/4 line of Section 22 from the Center to the proposed East 1/4 Corner. We tied in irons and fence as shown on the accompanying sketch. It was found that a group of parcels was split by James Smith. I was unable to obtain a decent copy of this survey but I used the deeds from these splits to evaluate the usage of the East-West 1/4 line by James Smith (See deed page 20 and sketch, page 21). The found irons along the south line of the Smith parcels line up well with themselves and are within 1 foot of line with the northerly of the two "Centers" as monumented. This location also fits well with the fence and tree row along this line. By projecting the monumented location of the East-West 1/4 line to the east the line falls 7.64 feet north of the "1/2 distance" point between I-07 and I-09. I recommend setting the East 1/4 Corner at the intersection of the monumented (James Smith?) line projected easterly to the East line of Section as derived from the plat monumentation projected south.

