

**LAND CORNER RECORDATION CERTIFICATE**  
 Filing Requirement of Act 74, Mich. P.A. 1970

9

FILED

OCT 17 10 34 AM '95  
 HANCI HAVILANE  
 REGISTER OF DEEDS  
 LIVINGSTON COUNTY, MI  
 48843

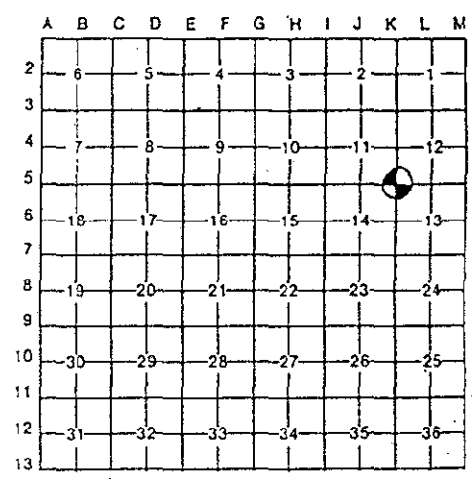
Public Land Survey	T	<u>3N</u>	R	<u>6E</u>	<u>K-05</u>
	T	---	R	---	---
	T	---	R	---	---
	T	---	R	---	---
Property Controlling in Section	S	---	T	---	---
Miscellaneous Property in Sec.	S	---	T	---	---

L.S.C.# 511m  
 Register of Deeds Stamp & File Number

Lot No. \_\_\_\_\_, Recorded Plat \_\_\_\_\_  
 Private Claims \_\_\_\_\_

Jack K. Smith, in a field survey on October 10, 1995.

hereby certify that under requirements of P.A. 74, Michigan P.A. of 1970, the corner points mentioned in lines 1 and 2 above were in conformance with regulations and rules therefore as required in the current manual of survey instructions of the United States Department of the Interior, Bureau of Land Management or by a decree of a Court of Law and/or that the corner points mentioned in lines 3, 4 and 5 above were in conformance with the rules of the Michigan Board of Land Surveyors or by a Decree of a Court of Law; established, re-established, monumented, re-monumented, recovered, found as expressed below:



**NOTE:** Not more than 4 corners, all in the same town and range, may be recorded on this certificate.

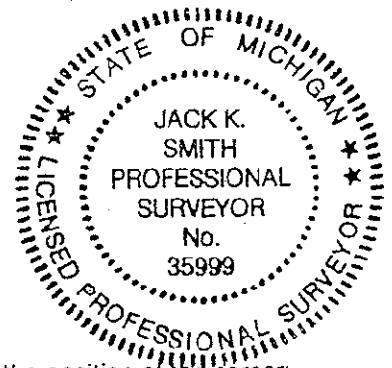
Description of original monument and accessories and/or subsequent restoration:  
 K-05 The Northwest Corner of Section 13, Hartland Township was set by the GLO in 1823 by S. Sibley.  
 The original witnesses are:

- W Oak 14" S21 1/2°E 1.80 Ch (118.8')
- B Oak 8" S40 1/2°W 2.04 Ch (134.6')

**NOTE:** NONE OF THE ORIGINAL WITNESSES COULD BE FOUND OR PERPETUATED.  
 SEE THE BACK OF THIS SHEET FOR ADDITIONAL HISTORICAL DATA.

Description of corner evidence found and/or method applied in restoring or reestablishing corner:  
 K-05 Found PK nail over a 3/8" square rod.

SURVEY &  
 RE-MONUMENTATION  
 NOV 27 1995  
 COMMISSION



Description of monument for corner and accessories established to perpetuate locating the position of the corner:  
 K-05 Northwest Corner, Section 13, T3N, R6E  
 Set 30" x 1 1/4" iron pipe with 6" x 1 1/4" break-off and brass cap marked as "Livingston County Monument Corner" in monument box. Note: all witness pipes fall 1' behind back of curb in intersection.

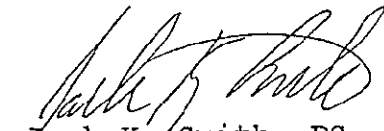
- N45°E 36" x 1" iron pipe with brass "Witness" cap 42.58'
- N45°W 36" x 1" iron pipe with brass "Witness" cap 42.83'
- S45°W 36" x 1" iron pipe with brass "Witness" cap 44.33'
- S45°E 36" x 1" iron pipe with brass "Witness" cap 43.27'

Signed by Jack K. Smith Date October 15, 1995  
 Surveyor's Michigan License No. 35999

June 20, 1995

K-05 T3N - R6E: NORTHWEST CORNER, SECTION 13, HARTLAND TOWNSHIP

We found a 3/8" square iron in a monument box 2'± west of the centerline of Fenton Road and on the centerline of Dunham Road (gravel). The corner was originally recorded as being set by S. Sibley in 1823. This corner is shown on a survey from 1916 by Dunning with two witnesses. Finney and Kostecke show an iron at the corner in 1971. An Act 74 by Oscar Boss from 1973 calls for a 3/8" square bar. Kostecke calls for a PK nail in 1974. The intersection of Fenton and Dunham was rebuilt in 1993-94 and a monument box was placed. In an Act 74 by Brad Thompson in July of 1990 the witnesses are apparently reversed between the West 1/4 Corner and the Northwest Corner of Section 13 and the monumentation is called out as a PK nail. In 1991 Desine copied the witnesses by Brad Thompson as shown on the attached Act 132. In August, 1990 Gilbert Bonno calls for a 1/2" re-rod. The witnesses from Thompson of 1990 still matched with the present monument box. Measured distances along the West line of Section 13 fit well with those shown on surveys by Boss between 1977 and 1986. A sweep of the area did not reveal any additional irons. This Corner is open for GPS occupation. I recommend accepting K-05, the Northwest Corner of Section 13, at the location as is presently monumented.

  
Jack K. Smith, PS  
Desine Inc.

