

**LAND CORNER RECORDATION CERTIFICATE**  
**Filing Requirement of Act 74, Mich. P.A. 1970**

NANCY HAVILAND  
 REGISTER OF DEEDS  
 LIVINGSTON COUNTY, MI  
 48843

OCT 17 10 34 AM '95

RECEIVED

Four corners in  
LIVINGSTON  
 (County)

Located In: Corner Code #

Public Land Survey	T	<u>3N</u>	R	<u>6E</u>	<u>K-06</u>
	T	_____	R	_____	_____
	T	_____	R	_____	_____
	T	_____	R	_____	_____
Property Controlling in Section	S	_____	T	_____	_____
Miscellaneous	S	_____	T	_____	_____
Property in Sec.	S	_____	T	_____	_____

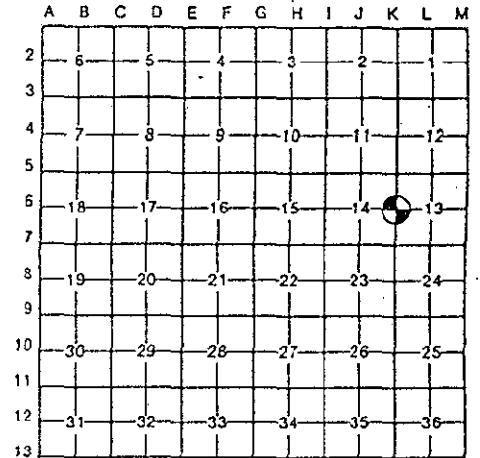
L.S.C.# 510m

Register of Deeds Stamp & File Number

Lot No. \_\_\_\_\_, Recorded Plat \_\_\_\_\_  
 Private Claims \_\_\_\_\_

Jack K. Smith, in a field survey on October 10, 1995

hereby certify that under requirements of P.A. 74, Michigan P.A. of 1970, the corner points mentioned in lines 1 and 2 above were in conformance with regulations and rules therefore as required in the recent manual of survey instructions of the United States Department of the Interior, Bureau of Land Management or by a decree of a Court of Law and/or that the corner points mentioned in lines 3, 4 and 5 above were in conformance with the rules of the Michigan Board of Land Surveyors or by a Decree of a Court of Law; established, re-established, monumented, re-monumented, recovered, found as expressed below:



**NOTE: Not more than 4 corners, all in the same town and range, may be recorded on this certificate.**

Description of original monument and accessories and/or subsequent restoration:  
 K-06 The West 1/4 Corner of Section 13, Hartland Township was set by the GLO in 1823 by S. Sibley.  
 The original witnesses are:  
     W Oak      30"   S13 1/2°W      71 lk (46.9')  
     W Oak      26"   S71°E            1.38 Ch (91.1')

**NOTE: NONE OF THE ORIGINAL WITNESSES COULD BE FOUND OR PERPETUATED- SEE THE BACK OF THIS SHEET FOR ADDITIONAL HISTORICAL DATA.**

Description of corner evidence found and/or method applied in restoring or reestablishing corner:  
 K-06 Found PK nail over a T iron.

**SURVEY &  
 REMONUMENTATION  
 NOV 27 1995  
 COMMISSION**



Description of monument for corner and accessories established to perpetuate locating the position of the corner:  
 K-06 West 1/4 Corner, Section 13, T3N, R6E  
 Set 30" x 1 1/4" iron pipe with 6" x 1 1/4" break-off and brass cap marked as "Livingston County Monument Corner" in monument box.

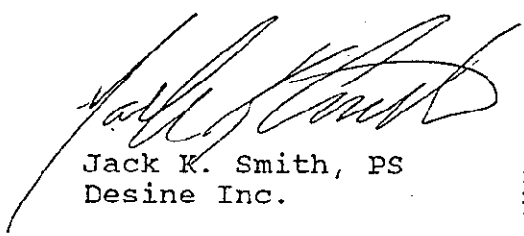
N20°W	Set nail and tag in SW side of 24" Oak	77.78'
N20°E	Set nail and tag in NW side 18" Elm	74.00'
N45°W	Set nail and tag in SW side of 12" Elm	58.87'
N88°W	Set nail and tag in N side 18" Elm	49.52'

Signed by [Signature] Date October 15, 1995  
 Surveyor's Michigan License No. 35999

June 20, 1995

K-06 T3N - R6E: WEST 1/4 CORNER, SECTION 13, HARTLAND TOWNSHIP

We found a PK nail over a "T" iron 1 foot  $\pm$  east of the centerline of Fenton Road and 5 feet  $\pm$  south of the extension of a fence line going easterly (appears to be the northerly line of "Yale Court"). There are remnants of old fence to the west. The corner was originally recorded as being set by S. Sibley in 1823. This corner is shown on a survey from 1916 by Dunning with one witness (now gone). The corner is shown on a plat of survey by Finney and Kostecke from 1974 and in a Boss 132 of 1982 as a T iron. An Act 74 by Harold Phillips from 1985 calls for a PK nail. In an Act 74 by Brad Thompson in 1990 the witnesses are reversed between the West 1/4 Corner and the Northwest Corner of Section 13. In 1991 Desine copied the witnesses by Brad Thompson as shown on the attached Act 132. Measured distances to adjoining corners fit well with those shown on surveys by Boss (1982 and 1986), Delta (1989), Kostecke (1971) and Desine (1991). A sweep of the area did not reveal any additional irons. This corner is open for GPS use but the traffic along this road is fast and the corner is in a bad position for sight distance. I recommend accepting K-06, the West 1/4 Corner of Section 13, at the location as is presently monumented.

  
Jack K. Smith, PS  
Desine Inc.

