

SURVEY & REMONUMENTATION

FEB 24 1998

9- FILED

SECTION

LAND CORNER RECORDATION CERTIFICATE
Filing Requirement of Act 74, Mich. P.A. 1970

For corners in

LIVINGSTON

(County)

Located In:

Corner Code #

1. Public Land Survey

T 4N R 5E E-13

2. Property Controlling in Section

3. Miscellaneous Property in Sec.

S T R
S T R
S T R
S T R

1997 SEP 23 A 10: 18

NANCY HAVILAND
REGISTER OF DEEDS
LIVINGSTON COUNTY, MI.
48843

L.S.C.#702m

Register of Deeds Stamp & File Number

4. Lot No. _____, Recorded Plat _____
5. Private Claims _____

I, Jack K. Smith, in a field survey on July 20, 1997 do hereby state that under requirements of P.A. 74, Michigan P.A. of 1970, the corner points mentioned in lines 1 and 2 above were in conformance with regulations and rules therefore as required in the current manual of survey instructions of the United States Department of the Interior, Bureau of Land Management or by a decree of a Court of Law and for that the corner points mentioned in lines 3, 4 and 5 above were in conformance with the rules of the Michigan Board of Land Surveyors or by a Decree of a Court of Law, established, re-established, monumented, recovered, found as expressed below:

NOTE: Not more than 2 corners, all in the same town and range, may be recorded on this certificate.

	A	B	C	D	E	F	G	H	I	J	K	L	M
1													
2	6	5			4		3		2			1	
3													
4	7	8			9		10		11			12	
5													
6	18	17			16		15		14			13	
7													
8	19	20			21		22		23			24	
9													
10	30	29			28		27		26			25	
11													
12	31	32			33		34		35			36	
13													

A. Description of original monument and accessories and/or subsequent restoration:

E-13 The Southeast Corner of Section 32, Deerfield Township was set by John Mullett for the GLO in 1823.

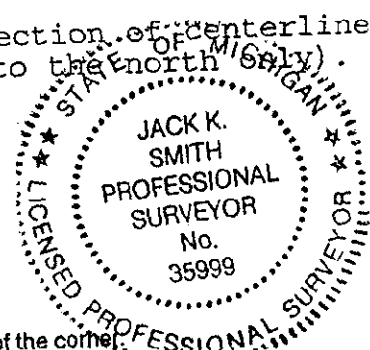
The original witnesses are:

W Oak	8"	N41 1/2°W	30 (19.8')
Poplar	8"	N11°E	34 (22.4')

NOTE: NONE OF THE ORIGINAL WITNESSES COULD BE FOUND OR PERPETUATED. SEE THE BACK OF THIS SHEET FOR ADDITIONAL HISTORICAL DATA.

B. Description of corner evidence found and/or method applied in restoring or reestablishing corner:

E-13 Found 1/2" re-rod with mangled cap on the intersection of centerlines of Allen Road (gravel) and Latson Court (gravel to the north only).



C. Description of monument for corner and accessories established to perpetuate locating the position of the corner:
E-13 Southeast Corner, Section 32, T4N, R5E - Set 1 1/4" x 30" steel pipe with 6" break-off section and brass cap marked as "Livingston County Remonumentation Corner".

S40°E	Set nail/tag in SW side 18" Willow	24.44'
S54°W	Set nail/tag in NW side 14" Elm	44.29'
N44°W	Set nail/tag in East side 12" Ash	42.25'
N12°W	Set nail/tag in East side 18" Hickory	98.69'

Signed by Jack K. Smith
Surveyor's Michigan License No. 35999

Date July 20, 1997

P.A. 345 1990, APPROVED BY LIVINGSTON COUNTY
PEER GROUP ON 7-16-97 CO. REP JEO

FORM APPROVED BY MICHIGAN STATE BOARD OF PROFESSIONAL SURVEYORS, JAN. 28, 1971
REVISED MAY 14, 1975
REVISED JAN., 1983
REVISED OCT., 1995

July 12, 1997

E-13 T4N - R5E: SOUTHEAST CORNER, SECTION 32, DEERFIELD TOWNSHIP

MONUMENTATION

E-13 was set by John Mullett for the GLO in 1823. This corner is currently marked by a 1/2" re-rod with mangled cap, apparently set by Boss in 1990 over an existing "T" iron (see 1990 Act 132). The "T" iron was set by Consumers Power in 1969.

MEASUREMENTS

Current measure is 2642.61 feet to the east and 2647.49 feet to the west. Post 1970 measures to east and west compare well. The early measure of Bullock (1875) to the west is 25 feet short of current. The closing corner falls 250.05 feet east of E-13 (GLO computes to 250.1 feet).

OCCUPATION

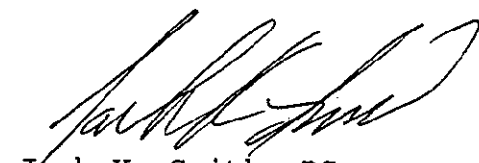
The corner falls on the intersection of centerlines of Allen Road (gravel) and Latson Court (gravel to the north only). A sweep of the area around the corner with a magnetic locator did not reveal any alternate corner positions. This corner is fairly open for GPS and shouldn't be a great problem for direct occupation.

RECORDATION

There are 4 Act 74s filed for this corner all of which call for a "T" iron. The Boss Act 74 of 1992 calls for a found 1/2" iron over a "T" iron but the 1990 Act 132 by Boss says that the 1/2" iron was set during that survey. The corner has been shown on 8 Act 132s.

SUMMARY

The current location of the corner has been used for numerous surveys in the area and no other position has been used that I could find. The witnesses can be traced back to 1969. Considering the 20 plus years of continuous use I recommend that the existing 1/2" iron (and "T" iron ?) be replaced with a Livingston County Remonumentation pipe and cap.


Jack K. Smith, PS
Desine Inc.

