

SURVEY & REMONUMENTATION

FEB 24 1998

SECTION

LAND CORNER RECORDATION CERTIFICATE
Filing Requirement of Act 74, Mich. P.A. 1970

FILED

9-

For corners in

LIVINGSTON

Located In:

Corner Code #

(County)

1. Public Land Survey

T 4N R 5E

J-13

T ___ R ___

T ___ R ___

T ___ R ___

2. Property Controlling in Section

S ___

T ___ R ___

S ___

T ___ R ___

3. Miscellaneous Property in Sec.

S ___

T ___ R ___

S ___

T ___ R ___

1997 SEP 23 A 10:19

NANCY HAVILAND
REGISTER OF DEEDS
LIVINGSTON COUNTY, MI.
48843

L.S.C. #707m

Register of Deeds Stamp & File Number

4. Lot No. _____, Recorded Plat _____

5. Private Claims _____

	A	B	C	D	E	F	G	H	I	J	K	L	M
1													
2	6		5		4		3		2		1		
3													
4	7		8		9		10		11		12		
5													
6	18		17		16		15		14		13		
7													
8	19		20		21		22		23		24		
9													
10	30		29		28		27		26		25		
11													
12	31		32		33		34		35		36		
13													

Jack K. Smith

I, Jack K. Smith, in a field survey on Aug 7, 1997 do hereby state that under requirements of P.A. 74, Michigan P.A. of 1970, the corner points mentioned in lines 1 and 2 above were in conformance with regulations and rules therefore as required in the current manual of survey instructions of the United States Department of the Interior, Bureau of Land Management or by a decree of a Court of Law and /or that the corner points mentioned in lines 3, 4 and 5 above were in conformance with the rules of the Michigan Board of Land Surveyors or by a Decree of a Court of Law; established, re-established, monumented, recovered, found as expressed below:

NOTE: Not more than 2 corners, all in the same town and range, may be recorded on this certificate.

A. Description of original monument and accessories and/or subsequent restoration:

J-13 The South 1/4 Corner of Section 35, Deerfield Township was set by John Mullett for the GLO in 1823.

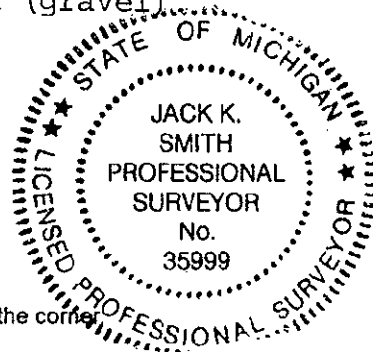
The original witnesses are:

W Oak	9"	N87°W	no dist noted
W Oak	20"	N57°E	no dist noted

NOTE: NONE OF THE ORIGINAL WITNESSES COULD BE FOUND OR PERPETUATED. SEE THE BACK OF THIS SHEET FOR ADDITIONAL HISTORICAL DATA.

B. Description of corner evidence found and/or method applied in restoring or reestablishing corner:

J-13 Found 1/2" re-rod on the centerline of Allen Road (gravel)



C. Description of monument for corner and accessories established to perpetuate locating the position of the corner:

J-13 South 1/4 Corner, Section 35, T4N, R5E - Set 1 1/4" x 30" steel pipe with 6" break-off section and brass cap marked as "Livingston County Remonumentation Corner".

N70°E	Set nail/tag in South side 10" Hickory	60.86'
N66°W	Set nail/tag in South side N'ly quad Walnut	66.66'
S62°E	Set witness pipe* and carsonite post	33.60'
S70°W	Set witness pipe* and carsonite post	47.12'

* 36"X1" iron pipe with brass cap marked "Livingston County Remonumentation Witness"

Signed by Jack K. Smith

Date Aug 7, 1997

Surveyor's Michigan License No. 35999

July 12, 1997

J-13 T4N - R5E: SOUTH 1/4 CORNER, SECTION 35, DEERFIELD TOWNSHIP

MONUMENTATION

J-13 was set by John Mullett for the GLO in 1823. This corner is currently marked by a 1/2" re-rod which was shown as set by Benton (at found nail ?) in 1976.

MEASUREMENTS

Current measure is 2645.69 feet to the west and 2654.67 feet to the east. The closing corner falls 277.71 feet east of J-13.

OCCUPATION

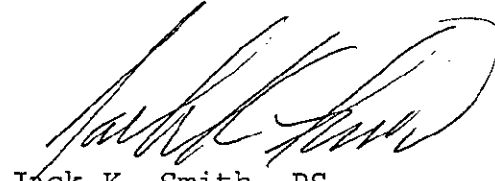
J-13 falls on the centerline of Allen Road (gravel). There is a tree row beginning approximately 1000 feet north of the corner. A sweep of the area around the corner with a magnetic locator did not reveal any alternate corner positions. This corner is open for GPS.

RECORDATION

There are no recorded Act 74s for this corner but it has been shown on 3 Act 132s.

SUMMARY

The current location of the corner has been used for previous surveys in the area and no other position has been used that I could find. I recommend that the existing 1/2" iron be replaced with a Livingston County Remonumentation pipe and cap.


Jack K. Smith, PS
Desine Inc.

