

**MACKINAC COUNTY REMONUMENTATION CORNER  
LAND CORNER RECORDATION CERTIFICATE  
Filing Requirement of Act 74, Mich. P.A. 1970**

For corners in

Mackinac (County) Located In: Corner Code #  
 1. Public Land Survey T 40N R 04W P.C.C. 8  
 T \_\_\_\_\_ R \_\_\_\_\_ NW Cor. PC 8  
 T \_\_\_\_\_ R \_\_\_\_\_  
 T \_\_\_\_\_ R \_\_\_\_\_  
 2. Property Controlling S \_\_\_\_\_ T \_\_\_\_\_ R \_\_\_\_\_  
 in Section S \_\_\_\_\_ T \_\_\_\_\_ R \_\_\_\_\_  
 3. Miscellaneous S \_\_\_\_\_ T \_\_\_\_\_ R \_\_\_\_\_  
 Property in Sec. S \_\_\_\_\_ T \_\_\_\_\_ R \_\_\_\_\_

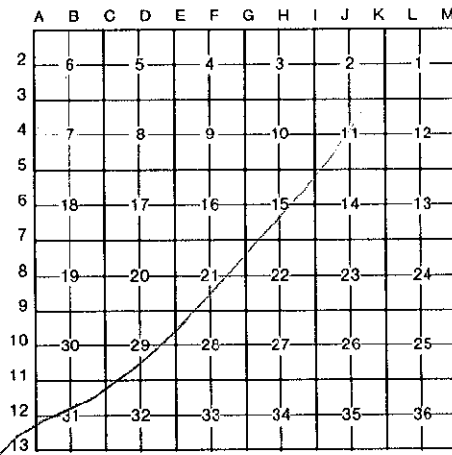
**RECEIVED & FILED**  
 DIANE FRANKOVICH  
 MAC... COUNTY DEPT. OF DEEDS

DEC 11 1995  
 AM PM  
 7|8|9|10|11|12|1|2|3|4|5|6

Register of Deeds Stamp & File Number

4. Lot No. \_\_\_\_\_, Recorded Plat \_\_\_\_\_  
 5. Private Claims \_\_\_\_\_

I, Neil E. Hill, in a field survey on NOVEMBER 17 1995, do hereby certify that under requirements of P.A. 74, Michigan P.A. of 1970, the corner points mentioned in lines 1 and 2 above were in conformance with regulations and rules therefore as required in the current manual of survey instructions of the United States Department of the Interior, Bureau of Land Management or by a decree of a Court of Law and/or that the corner points mentioned in lines 3, 4 and 5 above were in conformance with the rules of the Michigan Board of Land Surveyors or by a Decree of a Court of Law; established, re-established, monumented, re-monumented, recovered, found as expressed below:



**NOTE: Not more than 4 corners, all in the same town and range, may be recorded on this certificate.**

A. Description of original monument and accessories and/or subsequent restoration:

GLO notes. Set Post

- 8" Birch N59E 7 lks.
- 12" W. Ash S22W 4 lks.

See sketch on reverse

B. Description of corner evidence found and/or method applied in restoring or reestablishing corner:

This corner found by Charlevoix Engineering and Abstract as being a 1" pipe Sept. 1974 (3/4" inside dia.)

Witnessed as:

- 16" Cedar N40W 10.15'
- 8" Cedar N60E 16.25'
- 12" Cedar S15E 27.60'

Accepted this corner location.

ACCEPTED BY THE MACKINAC COUNTY  
 SURVEY DEPT. OF DEEDS  
 (ORIGINAL COPY TO BE FILED)  
 (COPY OF THIS FILE TO BE FILED)  
 RECEIVED 9-10-95

*James H. Granger*

C. Description of monument for corner and accessories established to perpetuate locating the position of the corner:

Removed 3/4" pipe with cap #3920. Replaced with 5/8" re-rod and std. county remonumentation corner.

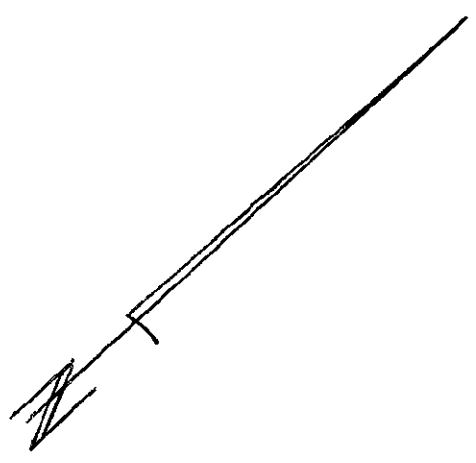
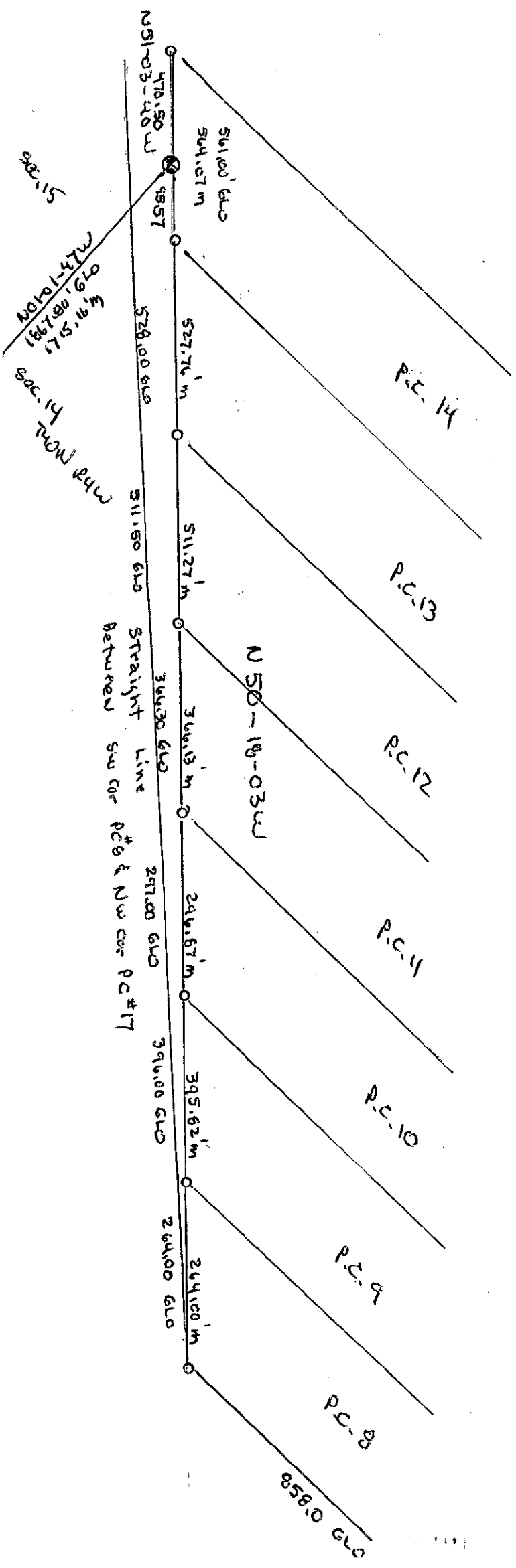
- 12" Spruce N80E 32.07' S50-18-03E 264.00 feet to SE Cor. PC8
- 14" Cedar(old) N60E 16.90' N50-18-03W 395.82 feet to NW Cor. PC 9
- 16" Cedar N10E 30.90'
- 24" Cedar N40W 10.69'



Signed by Neil E. Hill P.S. Date

NOVEMBER 17, 1995

Surveyor's Michigan License No. 27447



Lines computed to  
 the west line of  
 2nd. Stree  
 Extended

Not to scale