

STATE OF MICHIGAN  
DEPARTMENT  
OF  
NATURAL RESOURCES

LAND CORNER RECORD

Mackinac COUNTY

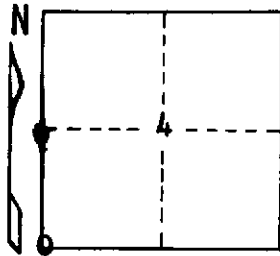
T 41N R 11W

DESCRIPTION OF CORNER Sec. Cor. common to Secs. 4-5-8-9

CORNER MONUMENT 1" Pipe with 4" Aluminum Cap

DATE MONUMENT PLACED AND WITNESSED 7-24-69

WITNESSES TO CORNER..... 10" Hard Maple (S5 NBT) N52°W 18.4'



10" Hard Maple (S8 NBT) S1°E 15.3'

AND

CIRCLE CORNER REGISTERED

DESCRIPTION IN DETAIL AS TO HOW CORNER WAS LOCATED AND IDENTIFIED OR RESTORED.

This corner replaced at a 1½" Iron Pipe and wood post, set by unknown persons.  
Found remains of a down Cedar, bearing S42°E 15 Links, for a probable witness tree.  
Corner lies on East edge of an old woods road, and approx. 80' SW of County Road.

SURVEYOR'S SEAL

SIGNED

*Billy D. Buckler*  
Billy D. Buckler  
REGISTERED LAND SURVEYOR

DATE

9-28-71

DISTRIBUTION:

County Courthouse  
Area Forester (Regions I & II)  
District or Region Surveyor  
Forestry Div., Lansing

R 4047  
Rev. 10/68