

STATE OF MICHIGAN  
DEPARTMENT  
OF  
NATURAL RESOURCES

LAND CORNER RECORD

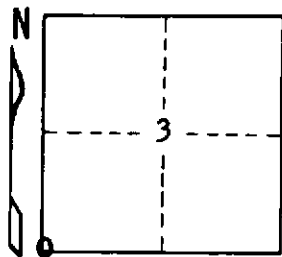
Mackinac COUNTY  
T 41N R 11W

DESCRIPTION OF CORNER Sec. Cor. common to Secs. 3-4-9-10

CORNER MONUMENT 1" Pipe with 4" Aluminum Cap

DATE MONUMENT PLACED AND WITNESSED 9-18-69

WITNESSES TO CORNER..... 16" W. Pine (S9 NBT) S25°W 23.9'



14" W. Pine (S4 NBT) N58°W 9.2'

AND

CIRCLE CORNER REGISTERED

DESCRIPTION IN DETAIL AS TO HOW CORNER WAS LOCATED AND IDENTIFIED OR RESTORED.

This corner replaced at an old squared wood post. Found site of a large turn-out where possibly a 20" Y. Birch has been; bearing S56°W 56 links. Found old blazes to East; found distance north to swamp (● chains) to agree with record. Position checks well with corners one mile to East and one mile to West. Found a line of blazes South to lake, from this corner.

SURVEYOR'S SEAL

SIGNED

*Billy D. Buckler*  
Billy D. Buckler  
REGISTERED LAND SURVEYOR

DATE

9-27-71

DISTRIBUTION:

County Courthouse  
Area Forester (Regions I & II)  
District or Region Surveyor  
Forestry Div., Lansing