

#15

LAND CORNER RECORDATION CERTIFICATE
Filing Requirement of Act 74, Mich. P.A. 1970

For corners in
 Mackinac
 County

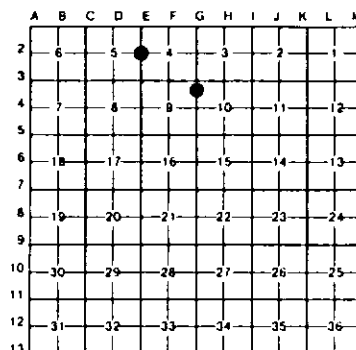
	Located In:	Corner Code #/
1 Public Land Survey	T 41N R 11W	E2
	T 41N R 11W	MC SOUTH OF G3
	T R	
	T R	
2 Property Controlling in Section	S T R	
	S T R	
3 Miscellaneous Property in Sec	S T R	
	S T R	

Register of Deeds Stamp & File Number

4. Lot No. _____ Recorded Plat _____
 5. Private Claims _____

I, Stephan J. Szyzkowski, in a field survey on October 21, 1993, 19____ do hereby certify that under requirements of P.A. 74, Michigan P.A. of 1970, the corner points mentioned in lines 1 and 2 above were in conformance with regulations and rules therefore as required in the current manual of survey instructions of the United States Department of the Interior, Bureau of Land Management or by a decree of a Court of Law and/or that the corner points mentioned in lines 3, 4 and 5 above were in conformance with the rules of the Michigan Board of Land Surveyors or by a Decree of a Court of Law, established, re-established, monumented, re-monumented, recovered, found as expressed below.

NOTE: Not more than 4 corners, all in the same town and range, may be recorded on this certificate.



A. Description of original monument and accessories and/or subsequent restoration.

(E2) Quarter corner common to Sections 4 and 5, T41N-R11W. Corner previously recorded by Billy O. Buckler in 1969 as a 1" pipe with 4" aluminum cap with the following witnesses: 8" Hard Maple (1/4s NBT) N01E, 15.1'; 15" Hard Maple (1/4s NBT) N83W 21.0'. Also noted is a 12" Hard Maple, blazed on four sides, 10 feet east of the corner.
 (MC SOUTH OF G3) 1969: Corner recorded by Billy O. Buckler, ALS as follows: "This monument placed as a meander corner on the section line but north of the original meander corner position. Monument placed in the timber edge and on a very old line of blazes which we found running south from the section corner 3-4-9-10. Corner placed 1035.0' south of the section corner. Record distance - 1043.0' found no evidence of original corner or tamarack witness... MONR monument, 7" Cedar N73W 5.2', 4" Cedar N37E 8.7'.

B. Description of corner evidence found and/or method applied in restoring or reestablishing corner.

(E2) Found and accepted a 1" pipe with 4" diameter aluminum cap at record bearing and distance from the 1969 N01E N83W, now 9" diameter with old blaze overgrown. 1969 N87 N83W has been cut. Marked 3 new witness trees as described below.
 (WITNESS CORNER SOUTH OF G3) Buckler's monument was not recovered. Re-monumented the corner at record bearing and distance from Buckler's Cedar 8fs, now 8" and 10" dia., both found in good condition and with scribed blazes at root crown and GR. Measured distance north to Section Corner 3-4-9-10 and found it to be 1034.20'. At the position for the corner, I placed a 1"x32" painted iron pipe capped with a 4" dia. cast aluminum MONR tablet. Marked 2 new bearing trees as described below.

C. Description of monument for corner and accessories established to perpetuate locating the position of the corner.

(E2) Found 1" pipe with 4" dia. aluminum Michigan Dept. of Conservation cap. Blazed, scribed, and set measuring nails in the following new bearing trees: 14" Sugar N51E 17.15' mrdk "1/4s NBT" 6" Sugar S43E 20.0' mrdk "1/4s NBT" 3" Sugar S14W 3.13' mrdk "1/4s NBT" Set measuring nail in the record NBT: 9" Sugar N01E 15.45' mrdk "1/4s NBT" Found 4"x4" wood post with location poster adjacent to monument on the west.	(MC SOUTH OF G3) Set 1" pipe with 4" aluminum cap. Blazed, scribed, and set measuring nails in the following bearing trees: 9" Cedar N48E 14.1' mrdk "MC BT" 8" Cedar S87E 5.1' mrdk "MC BT" set measuring nails in the record 8fs: 8" Cedar N73W 5.3' 10" Cedar N37E 8.7' Placed a 1"x3"x6" board S21E, 1', centerline of E-W trail North, 30.5'
---	---

Signed by Stephan J. Szyzkowski Date 3-10-93

Surveyor's Michigan License No. 33986