

LAND CORNER RECORDATION CERTIFICATE
Filing Requirement of Act 74, Mich. P.A. 1970

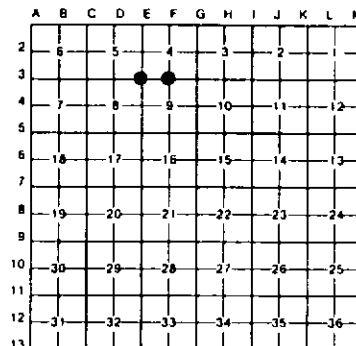
For corners in
Mackinac
County

Located In: Corner Code #

1. Public Land Survey	T 41NR 11W	F3
	T 41NR 11W	E3
	T R	
	T R	
2. Property Controlling in Section	S T R	
	S T R	
3. Miscellaneous Property in Sec.	S T R	
	S T R	

Register of Deeds Stamp & File Number

- 4. Lot No. Recorded Plat
- 5. Private Claims



I, Stephan J. Szyszkoski, in a field survey on April 14, 1993, 19____, do hereby certify that under requirements of P.A. 74, Michigan P.A. of 1970, the corner points mentioned in lines 1 and 2 above were in conformance with regulations and rules therof as required in the current manual of survey instructions of the United States Department of the Interior, Bureau of Land Management or by a decree of a Court of Law and/or that the corner points mentioned in lines 3, 4 and 5 above were in conformance with the rules of the Michigan Board of Land Surveyors or by a Decree of a Court of Law, established, re-established, monumented, re-monumented, recovered, found as expressed below.

NOTE: Not more than 4 corners, all in the same town and range, may be recorded on this certificate.

A. Description of original monument and accessories and/or subsequent restoration:

(F3) Quarter corner common to Sections 4-9. Corner reestablished and recorded in Michigan Dept. of Natural Resources, Forest Management Division records by Billy D. Buckler in 1972 as follows: "This corner replaced at an old squared post, set by unknown surveyor. Found no evidence of original witnesses which were; W. Pine 6" N9E 60 links, and W. Pine 4" S30W 39 links. Corner lies in small open marsh. Found a 5" Cedar with a blaze and notch facing corner. These marks are of indeterminate age, bearing S86E 49.2". Corner monument: 1" pipe with 4" aluminum cap placed 4/6/1972 with the following witnesses: 12" W. Pine (1/4S NBT) S48E 55.3', 8" Cedar (1/4S NBT) N15E 65.2'. Found no subsequent record.

(E3) Section corner common to Sections 4-5-8-9. Corner previously recorded by Billy D. Buckler RLS in 1971 as monumented by a 1" pipe with 4" aluminum cap and the following NBTs: 10" Hard Maple (S5 NBT) N32W 18.4', 10" Hard Maple (SB NBT) S1E 15.3'. Found no subsequent record.

B. Description of corner evidence found and/or method applied in restoring or reestablishing corner:

(F3) Found and accepted 1" pipe with 4" aluminum cap at record bearing and distance from Buckler's witnesses, the W. Pine now being 14" DBH, and the Cedar 10". From 1989 and 1992 traverse measurements by MDNR, I determined that the corner lies 2.4' North and 2.5' East of the single proportionate position, being 2655.91' east and 2650.85' west of adjacent monumented section corners. Marked two new bearing trees as described below.

(E3) Found and accepted the 1" pipe with 4" aluminum MDNR cap at record bearing and distance from the 1971 NBTs, both in good condition. Marked two new witnesses as described below.

C. Description of monument for corner and accessories established to perpetuate locating the position of the corner:

(F3) Found a 1" pipe with 4" dia. aluminum MDNR tablet. Set measuring nails in the record NBTs as follows:
14" W. Pine S48E 55.45'
10" Cedar N15E 65.3'
Blazed, scribed, and set measuring nails and disks in the following new bearing trees:
5" Cedar N87W, 66.6' mka 1/4S NBT
8" Cedar N70E, 46.4' mka 1/4S

(E3) Found a 1" pipe with 4" aluminum MDNR tablet. Set measuring nails in the record NBTs:
12" Hard Maple N52W 19.1'
12" Hard Maple S1E 15.85'
Blazed, scribed, and set measuring nails in the following new bearing trees:
10" Hard Maple N72E 6.35' "S4 NBT"
12" Cedar S76E 41.35' "S9 NBT"



Signed by Stephan J. Szyszkoski Date 4-14-93

Surveyor's Michigan License No 33986