

17

LAND CORNER RECORDATION CERTIFICATE
Filing Requirement of Act 74, Mich. P.A. 1970

For corners in
Mackinac
(County)

Located In: Corner Code --//

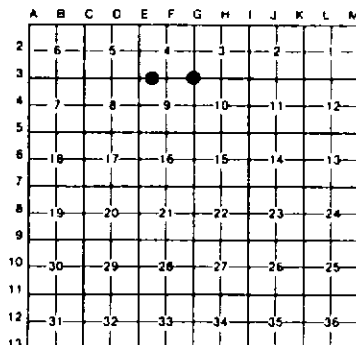
- | | | | | |
|------------------------------------|---|------|------|-----|
| 1. Public Land Survey | T | 41NR | 11W | G3 |
| | T | | R | |
| | T | | R | |
| | T | | R | |
| 2. Property Controlling in Section | S | 4T | 41NR | 11W |
| | S | | T | R |
| 3. Miscellaneous Property in Sec. | S | | T | R |
| | S | | T | R |

Register of Deeds Stamp & File Number

4. Lot No. _____, Recorded Plat _____
5. Private Claims _____

I, Stephan J. Szyszkoski, in a field survey on April 14, 1993, 19____, do hereby certify that under requirements of P.A. 74, Michigan P.A. of 1970, the corner points mentioned in lines 1 and 2 above were in conformance with regulations and rules therefore as required in the current manual of survey instructions of the United States Department of the Interior, Bureau of Land Management or by a decree of a Court of Law and/or that the corner points mentioned in lines 3, 4 and 5 above were in conformance with the rules of the Michigan Board of Land Surveyors or by a Decree of a Court of Law, established, re-established, monumented, re-monumented, recovered found as expressed below.

NOTE: Not more than 4 corners, all in the same town and range, may be recorded on this certificate.



A. Description of original monument and accessories and/or subsequent restoration

(G3) Corner common to Sections 3-4-9-10. Corner re-monumented in 1969 and recorded in 1971 by Billy D. Buckler ALS, as marked by a 1" pipe with a 4" aluminum cap and the following witnesses: 16" W. Pine (S9 N87) S25W 23.9', 14" W. Pine (S4 N67) N58W 9.2'. Found no subsequent record.

(15) Corner established and recorded in Michigan Department of Natural Resources, Forest Management Division records in 1972 by Billy D. Buckler as follows: "This corner placed midway and on line bet. Sec. Cor. to West and 1/4 Cor. to East. Found a squared wood post, 1.0' East of this location as well as an iron fence post and a wood post, 5.0' East and 6.0' South of this location. Corner lies in Cedar swamp". Monument placed was a 1" pipe with 4" aluminum cap with witnesses: 8" Cedar (N1/16 E) N28E 16.4', 7" Cedar (N1/16 E) N50W 14.0'

B. Description of corner evidence found and/or method applied in restoring or reestablishing corner:

(G3) Found and accepted Buckler's monument at record bearing and distance from the 1969 N87s, both in good condition. Marked two new bearing trees as described below.

(15) Found and accepted the 1" pipe with 4" aluminum cap at record bearing and distance from Buckler's 1972 witnesses. Recorded two new witnesses as described below.

C. Description of monument for corner and accessories established to perpetuate locating the position of the corner:

(G3) Found a 1" pipe with a 4" aluminum MDNR tablet.
Set measuring nails in the record N87s:
18" W. Pine S25W 25.1'
16" W. Pine N58W 9.45'
Blazed, scribed, and set measuring nails in the following new bearing trees:
6" Balsam S87W 11.7' "S9 N67"
10" W. Birch N25W 18.1' "S4 N87"



(15) Found a 1" pipe with 4" aluminum MDNR tablet
Set measuring nails with tags in the record E7s:
10" Cedar N28E 16.5'
8" Cedar N50W 15.0'
Blazed, scribed, and set measuring nail in the following new bearing tree:
10" Cedar S36W 6.7'
A metal fence post bears S30E, 8.5' from the corner.

Signed by Stephan J. Szyszkoski Date 4-14-93

Surveyor's Michigan License No. 33986