

MAR 20 2000

LAND CORNER RECORDATION CERTIFICATE
Filing Requirement of Act 74, Mich. P.A. 1970

SECTION

Mackinac County Remonumentation Corner

For corners in

Mackinac County	Located in:	Corner Code #
1. Public Land Survey	T41N R04W	I-12
	T R	
	T R	
	T R	
2. Property Controlling in Section	S T R	
	S T R	
3. Miscellaneous Property in Sec.	S T R	
	S T R	
4. Lot No.		Recorded Plat
5. Private Claims		

RECEIVED & FILED
DIANE FRANKOVICH
MACKINAC COUNTY REGISTER OF DEEDS

FEB 25 2000

AM PM
7|8|9|10|11|12|1|2|3|4|5|6

Register of Deeds Stamp & File Number

	A	B	C	D	E	F	G	H	I	J	K	L	M
1													
2	6	5	4	3	2	1							
3													
4	7	8	9	10	11	12							
5													
6	18	17	16	15	14	13							
7													
8	19	20	21	22	23	24							
9													
10	30	29	28	27	26	25							
11													
12	31	32	33	34	35	36							
13													

T41N R04W

I, Neil E. Hill, in a field survey on 12-20-99, do hereby state that under requirements of P.A. 74, Michigan P.A. of 1970, the corner points mentioned in lines 1 and 2 above were in conformance with regulations and rules therefore as required in the current manual of survey instructions of the United States Department of the Interior, Bureau of Land Management or by a decree of a Court of Law and /or that the corner points mentioned in lines 3, 4 and 5 above were in conformance with the rules of the Michigan Board of Land Surveyors or by a Decree of a Court of Law; established, re-established, monumented, recovered, found as expressed below:

NOTE: Not more than 2 corners, all in the same town and range, may be recorded on this certificate.

A. Description of original monument and accessories and/or subsequent restoration:

1845 GLO Notes J H Mullett	10" Aspen for 1/4 post			
1981 Harold Stockholm	9" Tamarack	N 15 E	123.1'	
Established corner by single proportion	9" Cedar	N 59 W	63.8'	
Set 2 1/2" Pipe w/ Brass cap	13" Tamarack	N 28 W	95.7'	
Liber B Page 324	Cedar Post	N 02 W	3.8'	

ACCEPTED BY THE MACKINAC COUNTY SURVEY PEER GROUP AS THE OFFICIAL CORNER UNDER P.A. 345 OF 1990 AT A MEETING HELD ON 12-03-99
Neil E. Hill

No Subsequent Information

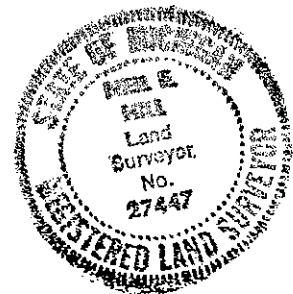
B. Description of corner evidence found and/or method applied in restoring or reestablishing corner:

1999 Fd 2 1/2" pipe with brass cap
Accepted corner location

C. Description of monument for corner and accessories established to perpetuate locating the position of the corner:

Corner is a 2 1/2" pipe with brass cap
Corner is in a marsh, 100' South of woods line and 450' West of RR grade.

14" Cedar	N 55 W	63.20'
4" T Cedar	S 50 W	63.56'
3" W Birch	N 40 E	62.46'
Cedar Post	Due N	3.8'



Bearings are compass bearings, corrected for declination, all distances are to a double-head nail in the side of the witness object unless otherwise noted.

Signed by: Neil E. Hill P.S., P.C.

Date: January 21 2000

Surveyor's Michigan License No. 27447

FORM APPROVED BY MICHIGAN STATE BOARD OF PROFESSIONAL SURVEYORS, JAN. 28, 1971
REVISED MAY 14, 1975
REVISED JAN., 1983
REVISED OCT., 1995

F. C0015