

MICHIGAN
DEPARTMENT OF CONSERVATION
FORESTRY DIVISION

LAND CORNER RECORD

T. 42N N.R. 6W

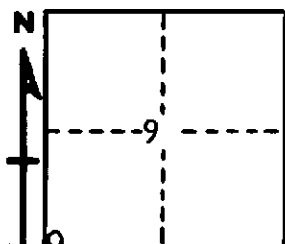
Mackinac COUNTY

DESCRIPTION OF CORNER Section Corner common to sections 8-9-16-17

CORNER MONUMENT 1" pipe with 4" aluminum cap.

DATE MONUMENT PLACED AND WITNESSED 4-24-62

WITNESSES TO CORNER..... 30" W. Pine Stump (NBT) S54°W, 50 links



26" W. Pine Stump (NBT) N21°W, 70 links

20" W. Pine Stump (NBT) N66°E, 98 links

AND

CIRCLE CORNER REGISTERED

DESCRIPTION IN DETAIL AS TO HOW CORNER WAS LOCATED AND IDENTIFIED OR RESTORED.

This corner was re-established by double proportionate measure from corners 1/2 mile north; 1 mile south; 2 miles west and 2 miles east. No evidence of original corner. Corner lies 4 chs. east of road.

SURVEYOR'S SEAL

SIGNED *Billy D. Buckler* DATE July 19, 1963
REGISTERED LAND SURVEYOR
Billy D. Buckler