

MICHIGAN
DEPARTMENT OF CONSERVATION
FORESTRY DIVISION

LAND CORNER RECORD

T. 42 N.R. 6W

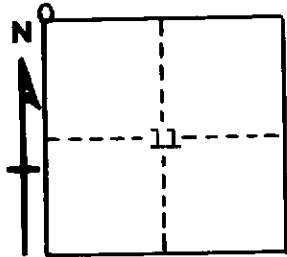
Mackinac COUNTY

DESCRIPTION OF CORNER Section corner for sections 2-3-10-11

CORNER MONUMENT 1" pipe with 4" brass cap

DATE MONUMENT PLACED AND WITNESSED 9-21-61

WITNESSES TO CORNER..... 40" W. Pine stump (NBT) S45°W 56½ links



16" Soft Maple (S2 NBT) N42°E 160 links

Corner lies on North edge of E-W road.

AND

CIRCLE CORNER REGISTERED

DESCRIPTION IN DETAIL AS TO HOW CORNER WAS LOCATED AND IDENTIFIED OR RESTORED.

This corner was replaced from Notes by Marcus Schaaf, Registered Land Surveyor, in 1939. Found Schaaf's old line and markers. Position checks with corner 1 mile east. Corner lies on North edge of road.

SURVEYOR'S SEAL

SIGNED Billy D. Buckler DATE March 14, 1962
REGISTERED LAND SURVEYOR
Billy D. Buckler