

LAND CORNER RECORDATION CERTIFICATE
Filing Requirement of Act 74, Mich. P.A. 1970

For corners in
MACKINAC

| (County) | Located In: | Corner Code #/ |
|------------------------------------|----------------|----------------|
| 1. Public Land Survey | T 42N R 6W | E5 |
| | T 42N R 6W | E5 |
| | T R | |
| | T R | |
| 2. Property Controlling in Section | S 8 T 42N R 6W | 13 |
| | S T R | |
| 3. Miscellaneous Property in Sec. | S T R | |
| | S T R | |

Register of Deeds Stamp & File Number

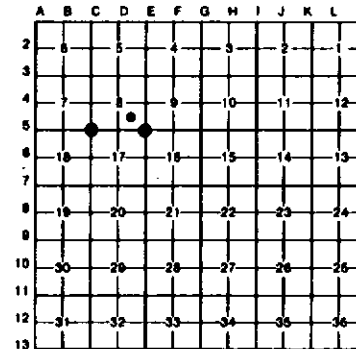
4. Lot No _____, Recorded Plat _____
5. Private Claims _____

C5 November 12, 1991

E5 October 30, 1991

I, Stephan J. Szyszkoski, in a field survey on 13 October 30, 1991, 19____, do hereby certify that under requirements of P.A. 74, Michigan P.A. of 1970, the corner points mentioned in lines 1 and 2 above were in conformance with regulations and rules therefore as required in the current manual of survey instructions of the United States Department of the Interior, Bureau of Land Management or by a decree of a Court of Law and/or that the corner points mentioned in lines 3, 4 and 5 above were in conformance with the rules of the Michigan Board of Land Surveyors or by a Decree of a Court of Law; established, re-established, monumented, re-monumented, recovered, found as expressed below:

NOTE: Not more than 4 corners, all in the same town and range, may be recorded on this certificate.



A. Description of original monument and accessories and/or subsequent restoration:

- (E5) CORNER REESTABLISHED BY BILLY D. BUCKLER 4-24-1962 BY DOUBLE PROPORTIONATE MEASUREMENT. BUCKLER SET A 1" PIPE WITH A 4" ALUMINUM CAP AND THE FOLLOWING BT'S: 30" W. PINE STUMP S54W 50 LINKS; 26" W. PINE STUMP N21W 70 LINKS; 20" WHITE PINE STUMP N66E 98 LINKS.
(C5) CORNER REESTABLISHED 4-25-1962 BY BILLY D. BUCKLER BY DOUBLE PROPORTIONATE MEASUREMENT. BUCKLER PLACED A 1" PIPE WITH 4" ALUMINUM CAP FROM WHICH THE FOLLOWING BT'S WERE TAKEN: 7" HARD MAPLE S03E 11.5 LINKS; 7" HARD MAPLE N02E 13.5 LINKS; 5" HARD MAPLE N30W 29 LINKS.
(13) CORNER NOT ESTABLISHED IN ORIGINAL SURVEY. FOUND NO SUBSEQUENT RECORD.

B. Description of corner evidence found and/or method applied in restoring or reestablishing corner:

- (E5) FOUND AND ACCEPTED A 1" PIPE CAPPED WITH A 4" ALUMINUM MI DEPT. OF CONSERVATION TABLET, APPROPRIATELY STAMPED, IN ACCORD WITH BUCKLER'S BT N21W, 70 LINKS, WHICH IS NOW A ROTTED MOUND. BUCKLER'S OTHER BT'S HAVE ROTTED COMPLETELY AWAY. THE MONUMENTED POSITION WAS VERIFIED BY AGREEMENT WITH BUCKLER'S MEASURE TO ADJACENT SECTION CORNERS WEST AND NORTH.
(C5) FOUND AND ACCEPTED 1" PIPE WITH 4" ALUMINUM MI DEPT. OF CONSERVATION TABLET IN ACCORD WITH REMAINING BT'S N02E (NOW 8") AND N30W (DEAD). BT S03E DESTROYED BY POWERLINE CLEARING.
(13) FOUND NO MONUMENTATION AT THIS POSITION. ESTABLISHED CORNER AT THE INTERSECTION OF STRAIGHT LINES CONNECTING OPPOSITE 1/16 CORNERS. CORNERS (16) AND (12) BEING MONUMENTED AND CORNERS (9) AND (14) BEING POSITIONS COMPUTED MIDWAY AND ON A STRAIGHT LINE BETWEEN ADJACENT SECTION-1/4 CORNERS. AT THE POSITION FOR THE CORNER, I PLACED A 1"x30" PAINTED IRON PIPE CAPPED WITH A CAST ALUMINUM MICHIGAN DEPARTMENT OF NATURAL RESOURCES TABLET STAMPED TO IDENTIFY THE CORNER.

C. Description of monument for corner and accessories established to perpetuate locating the position of the corner:

- | | | |
|--|---|---|
| (E5) FOUND 1" PIPE WITH 4" ALUMINUM TABLET. S66W 105.3' SET NAIL AND MDNR TAG IN SE FACE B" JACK PINE; N74W 106.5' SE FACE OF 18" W. PINE STUMP; SN 1' SQUARED WOOD POST; WEST'LY 228' LOCATION POSTER ON 3" SQUARED WOOD POST SET ON EAST SIDE OF W-S ROAD; EAST 6' APPROXIMATE W. EDGE OF PINE PLANTATION. | (C5) FND 1" PIPE WITH 4" ALUMINUM TABLET. S53E 6.58' S. FACE 11" MAPLE; N60W 7.69' N. FACE 12" MAPLE; N01E 13.70' E. FACE 7" MAPLE; N02E 8.9' N. FACE B" MAPLE WITH OLD BLAZES(0BT). DISTANCES ARE TO NAILS SET IN MDNR REF. TAGS PLACED IN FACES NOTED, NBT'S BLAZED AND SCRIBED AT BASE AND BH. | (13) SET 1" PIPE WITH MDNR TABLET. S79E 9.24' N. FACE 13" W. BIRCH; S31W 26.04' E. FACE 10" TRIPLE R. MAPLE; N63W 14.00' S. FACE B" R. MAPLE; N10E 2.53' W. FACE 10" R. MAPLE. DISTANCES ARE TO NAILS SET IN BRASS MDNR REF. TAGS PLACED IN THE FACES NOTED. ALL BT'S WERE BLAZED AND SCRIBED AT BASE AND BH. |
|--|---|---|

Signed by Stephan J. Szyszkoski

Date 11-25-91

Surveyor's Michigan License No. 33986

FORM APPROVED BY MICHIGAN STATE BOARD OF LAND SURVEYORS, JAN. 26, 1971

