

LAND CORNER RECORDATION CERTIFICATE
Filing Requirement of Act 74, Mich. P.A. 1970

For corners in

MACKINAC (County)	Located In:	Corner Code #
1. Public Land Survey	T 42N R 6W	F6
	T	
	T	
	T	
2. Property Controlling in Section	S 8 T 42N R 6W	16
	S 16 T 42N R 6W	12
3. Miscellaneous Property in Sec.	S T R	
	S T R	

Register of Deeds Stamp & File Number

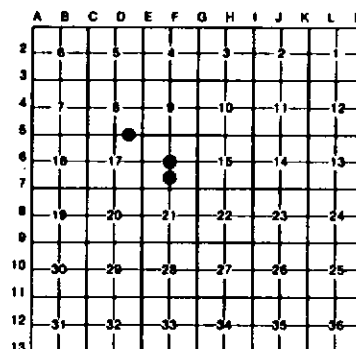
4. Lot No. _____, Recorded Plat _____
 5. Private Claims _____

12 November 12, 1991

16 September 16, 1991

I, Stephan J. Szyszkoski, in a field survey on F6 November 12, 1991, 19_____, do hereby certify that under requirements of P.A. 74, Michigan P.A. of 1970, the corner points mentioned in lines 1 and 2 above were in conformance with regulations and rules therefore as required in the current manual of survey instructions of the United States Department of the Interior, Bureau of Land Management or by a decree of a Court of Law and/or that the corner points mentioned in lines 3, 4 and 5 above were in conformance with the rules of the Michigan Board of Land Surveyors or by a Decree of a Court of Law; established, re-established, monumented, re-monumented, recovered, found as expressed below:

NOTE: Not more than 4 corners, all in the same town and range, may be recorded on this certificate.



A. Description of original monument and accessories and/or subsequent restoration:

- (F6) CORNER PREVIOUSLY ESTABLISHED AND RECORDED UNDER ACT 74, P.A. 1970 BY BILLY D. BUCKLER IN 1980 AS 1" PIPE WITH 4" ALUMINUM CAP PLACED AT INTERSECTION OF LINES CONNECTING OPPOSITE 1/4 CORNERS. BUCKLER'S BT'S ARE: 10" S. MAPLE S29W 8.0', 10" N. PINE N38E 8.2', 6" CEDAR N17W 15.4'.
 (16) CORNER ESTABLISHED 5-2-1962 BY BILLY D. BUCKLER MIDWAY AND ON LINE BETWEEN D5 AND E5. BUCKLER PLACED 1" PIPE WITH 4" ALUMINUM MI DEPT OF CONSERVATION TABLET. DBT'S: 4" S. MAPLE N72W 51 LINKS, 4" S. MAPLE N16E 31 LINKS. FOUND NO OTHER RECORD.
 (12) CORNER NOT ESTABLISHED IN ORIGINAL SURVEY. FOUND NO SUBSEQUENT RECORD.

B. Description of corner evidence found and/or method applied in restoring or reestablishing corner:

- (F6) FOUND AND ACCEPTED 1" PIPE CAPPED WITH 4" DIA. ALUMINUM MI DEPT. OF CONSERVATION TABLET, APPROPRIATELY STAMPED, IN ACCORD WITH W. PINE AND CEDAR BT'S ABOVE. MAPLE BT IS NOW A STUMP. ALSO FOUND SQUARED AND SCRIBED WOOD POST ADJACENT TO CORNER.
 (16) RECOVERED 1" PIPE PLACED BY BUCKLER WITH ALUMINUM TABLET MISSING. BUCKLER'S RECORD TIES CHECK AS SHOWN ABOVE (MAPLES ARE NOW 10"). DETERMINED PIPE TO BE 0.22'S AND 2.14'E OF BUCKLER'S INTENDED POSITION BUT ACCEPTED THE MONUMENT AS A CAREFUL AND FAITHFUL DETERMINATION OF THE POSITION OF CORNER.
 (12) FOUND NO MONUMENTATION AT THIS POSITION. ESTABLISHED CORNER EQUIDISTANT AND ON A STRAIGHT LINE BETWEEN MONUMENTED F6 AND F7. AT THE POSITION FOR THE CORNER, I PLACED A 1"x30" PAINTED IRON PIPE CAPPED WITH A CAST ALUMINUM MICHIGAN DEPARTMENT OF NATURAL RESOURCES TABLET STAMPED TO IDENTIFY THE CORNER.

C. Description of monument for corner and accessories established to perpetuate locating the position of the corner:

- | | | |
|---|--|--|
| (F6) FOUND 1" PIPE WITH 4" ALUMINUM TABLET. NSOW 20.8' NE FACE 12" MAPLE; EAST 43.0' S. FACE 18" HEMLOCK; N38E 8.7' W. FACE 14" N. PINE (DBT); N17W 15.9' W. FACE 8" CEDAR (DBT). DISTANCES ARE TO NAILS SET IN BRASS MDNR REF. TAGS PLACED IN THE FACES NOTED. NBT'S WERE BLAZED AND SCRIBED AT BASE AND BH. DBT'S WERE FOUND SCRIBED AT BASE AND WERE BLAZED AND SCRIBED AT BH. | (16) FOUND 1" IRON PIPE, 10" R. MAPLE N72W 33.7'; 10" R. MAPLE N16E 20.5'; 8" HEMLOCK S64E 23.8'; 12" W. BIRCH S43W 18.6'. PLACED SQUARED POST ADJACENT TO CORNER. DISTANCES ARE TO BT BLAZES. BLAZED DBT'S AT BH, NBT'S AT BASE AND BH. | (12) SET 1" PIPE WITH MDNR TABLET. S30W 13.78' N FACE TWIN 24" BIRCH; S62W 23.60' SE FACE 18" HEMLOCK; N04W 7.28' N FACE 8" MAPLE; S44E 9.62' SW FACE 12" MAPLE; NORTH 1" 8" CEDAR POST SQUARED AND SCRIBED. S65W 39.2' FWD PAINTED 2x2 WOOD POST. DISTANCES TO BT'S ARE TO NAILS SET IN BRASS MDNR REF. TAGS PLACED IN THE FACES NOTED. BLAZED AND SCRIBED ALL BT'S AT BASE AND BH. |
|---|--|--|

Signed by Stephan J. Szyszkoski
 Surveyor's Michigan License No. 339



11-25-91