

LAND CORNER RECORDATION CERTIFICATE
Filing Requirement of Act 74, Mich. P.A. 1970

#69

For corners in

MACKINAC

(County)

Located In:

Corner Code #

1. Public Land Survey	T	42N	R	6W	D3	40000
	T	42N	R	6W	D5	40009
	T		R			
	T		R			
2. Property Controlling in Section	S	8	T	42N	R	6W
	S		T		R	
3. Miscellaneous Property in Sec.	S		T		R	
	S		T		R	

Register of Deeds Stamp & File Number

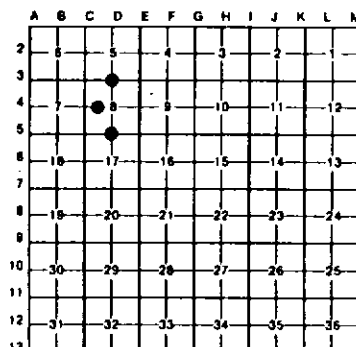
4. Lot No. _____ Recorded Plat _____
 5. Private Claims _____

D5 November 12, 1991

8 October 30, 1991

I, Stephan J. Szyszkoski, in a field survey on 03 October 30, 1991, 19_____, do hereby certify that under requirements of P.A. 74, Michigan P.A. of 1970, the corner points mentioned in lines 1 and 2 above were in conformance with regulations and rules therefore as required in the current manual of survey instructions of the United States Department of the Interior, Bureau of Land Management or by a decree of a Court of Law and/or that the corner points mentioned in lines 3, 4 and 5 above were in conformance with the rules of the Michigan Board of Land Surveyors or by a Decree of a Court of Law, established, re-established, monumented, re-monumented, recovered, found as expressed below:

NOTE: Not more than 4 corners, all in the same town and range, may be recorded on this certificate.



A. Description of original monument and accessories and/or subsequent restoration:

- (D3) ORIGINAL POST ESTABLISHED BY U.S. GOVERNMENT DEPUTY SURVEYOR H. BREVDORT, JR., 1845. BT'S: MAPLE 6 S16W 12, CHERRY 4 N30E 14. CORNER REESTABLISHED 9-22-61 BY BILLY D. BUCKLER MIDWAY AND ON LINE BETWEEN THE TWO ADJACENT SECTION CORNERS. NBT'S: 14" W. PINE STUB N20E 83.5 LINKS, 18" W. PINE STUB S75W 105 LINKS. FOUND NO OTHER RECORD OF PERPETUATION.
- (D5) CORNER REESTABLISHED 4-25-1962 BY BILLY D. BUCKLER MIDWAY AND ON LINE BETWEEN ADJACENT SECTION CORNERS. PLACED 1" IRON PIPE WITH 4" ALUMINUM CAP FROM WHICH BEARS: 12" BEECH N70W 12.5 LINKS, 16" BEECH S24E 13.5 LINKS.
- (B) CORNER NOT ESTABLISHED IN ORIGINAL SURVEY. FOUND NO SUBSEQUENT RECORD.

B. Description of corner evidence found and/or method applied in restoring or reestablishing corner:

- (D3) LOCATED 1" PIPE WITH 4" BRASS MI DEPT. OF CONSERVATION CAP PLACED BY BUCKLER IN ACCORD WITH HIS NBT'S. I DETERMINED THIS MONUMENT TO BE 3.37' NORTH AND 5.72' EAST OF THE INTENDED PROPORTIONATE POSITION BETWEEN THE TWO MONUMENTED ADJACENT SECTION CORNERS. AS THIS MONUMENT DOES NOT APPEAR TO HAVE BEEN USED TO ESTABLISH OR MONUMENT ANY TITLE LINES SINCE IT'S PLACEMENT IN 1961, I REMOVED IT AND PLACED IT EQUIDISTANT AND ON A STRAIGHT LINE BETWEEN MONUMENTED C3 AND E3 AS DETERMINED BY MY MEASUREMENTS.
- (D5) FOUND AND ACCEPTED 1" PIPE WITH 4" ALUMINUM MI DEPT. OF CONSERVATION TABLET PLACED BY BUCKLER IN ACCORD WITH ABOVE NOTED BEECH BT'S.
- (B) FOUND NO MONUMENTATION AT THIS POSITION. ESTABLISHED CORNER MIDWAY AND ON A STRAIGHT LINE BETWEEN C4 AND D4, D4 BEING AN UNMONUMENTED POSITION COMPUTED AS THE INTERSECTION OF STRAIGHT LINES CONNECTING OPPOSITE 1/4 CORNERS. AT THE POSITION FOR THE CORNER, I PLACED A 1"x30" IRON PIPE CAPPED WITH 4" DIA. CAST ALUMINUM MICHIGAN DEPARTMENT OF NATURAL RESOURCES TABLET STAMPED TO IDENTIFY THE CORNER.

C. Description of monument for corner and accessories established to perpetuate locating the position of the corner:

- | | | |
|---|---|--|
| (D3) PLACED 1" PIPE WITH 4" DIA. BRASS MI DEPT. OF CONSERVATION CAP STAMPED TO IDENTIFY THE CORNER. N62W 2.85' SET NAIL AND MI DEPT OF NATURAL RESOURCES TAG IN N FACE 8" J. PINE; N30E 15.45' SET NAIL AND MDNR TAG IN W. FACE 7" J. PINE; N86E 20.33' SET NAIL AND MDNR TAG IN N. FACE 10" J. PINE; S24E 14.60' SET NAIL AND MDNR TAG IN NE FACE 8" J. PINE; SE 1' 5" WOOD POST SQUARED. ALL BT'S NOTED WERE BLAZED AND SCRIBED AT BASE AND BH. | (D5) FOUND 1" IRON PIPE WITH ALUMINUM TABLET. N70W 8.9' SET NAIL AND MDNR TAG IN NE FACE 24" BEECH ABOVE BROKEN MDOT TAG; N24W 20.42 SET NAIL AND MDNR TAG IN E. FACE 12" MAPLE (SCRIBED 1/4S, NBT); N06W 12.9' FND MDOT REF. TAG IN W. FACE 12" MAPLE WITH OLD BASE BLAZE; N50E 20.65' SET NAIL AND MDNR TAG OVER MDOT TAG NW FACE 12" MAPLE (SCRIBED 1/4S); S26E 10.48' FND MDOT REF. TAG NE FACE 24" BEECH | (B) 1" PIPE WITH MDNR TABLET. S03E 14.65' SET NAIL AND MDNR TAG IN E. FACE 12" R. PINE; N30E 8.07' SET NAIL AND MDNR TAG IN NW FACE 10" W. BIRCH; N13W 15.79' SET NAIL AND MDNR TAG IN W. FACE 10" W. BIRCH; S84W 11.76' SET NAIL AND MDNR TAG IN N. FACE 10" BALSAM; WEST 0.7' 6" POST SQUARED AND SCRIBED; NORTH'LY 156' LOCATION POSTER ON NE CORNER. |
|---|---|--|

Signed by Stephan J. Szyszkoski

Date 11-25-91

Surveyor's Michigan License No. 33986

