

LAND CORNER RECORDATION CERTIFICATE
Filing Requirement of Act 74, Mich. P.A. 1970

#66

For corners in
MACKINAC

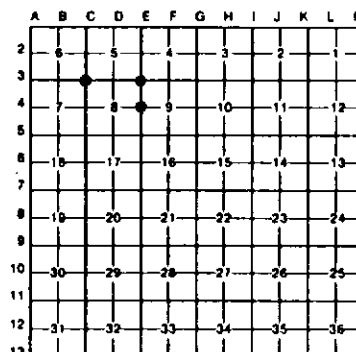
(County)	Located In:	Corner Code #
1. Public Land Survey	T 42N R 6W	E4 40011
	T 42N R 6W	E3 40015
	T 42N R 6W	C3 40016
	T _____ R _____	
2. Property Controlling in Section	S _____ T _____ R _____	
	S _____ T _____ R _____	
3. Miscellaneous Property in Sec.	S _____ T _____ R _____	
	S _____ T _____ R _____	

Register of Deeds Stamp & File Number

4. Lot No _____, Recorded Plat _____
5. Private Claims _____

I, Stephan J. Szyszkoski, in a field survey on September 16, 1991, 19_____, do hereby certify that under requirements of P.A. 74, Michigan P.A. of 1970, the corner points mentioned in lines 1 and 2 above were in conformance with regulations and rules therefore as required in the current manual of survey instructions of the United States Department of the Interior, Bureau of Land Management or by a decree of a Court of Law and/or that the corner points mentioned in lines 3, 4 and 5 above were in conformance with the rules of the Michigan Board of Land Surveyors or by a Decree of a Court of Law; established, re-established, monumented, re-monumented, recovered, found as expressed below:

NOTE: Not more than 4 corners, all in the same town and range, may be recorded on this certificate.



A. Description of original monument and accessories and/or subsequent restoration:

(E4) CORNER PERPETUATED FROM ORIGINAL BEARING TREES AND REMAINS OF STAKE BY BILLY D. BUCKLER 4-23-1962. BUCKLER PLACED A 1" PIPE WITH 4" BRASS CAP AND MARKED THE FOLLOWING BT'S: 4" RED PINE S38W 111 LINKS; 10" JACK PINE N89W, 113 LINKS.

(E3) CORNER RESTORED BY BILLY D. BUCKLER 9-21-1961 AT PROPORTIONATE DEPARTURE AND RECORD DISTANCE FROM ORIGINAL CORNER 1 MILE NORTH. BUCKLER PLACED A 1" PIPE WITH 4" BRASS CAP AND ESTABLISHED THE FOLLOWING BT'S: 15" R. PINE S75W 102 LINKS; 24" W. PINE STUMP N80E 31 LINKS; 24" W. PINE STUMP S49E 34.5 LINKS.

(C3) CORNER REESTABLISHED BY BILLY D. BUCKLER 9-21-1961 BY PROPORTIONATE MEASURE E-W AND FROM EDGE OF MARSH 4.00 CHS SOUTH. BUCKLER PLACED A 1" PIPE WITH 4" BRASS CAP FOR THE CORNER AND MARKED THE FOLLOWING TREES: 6" R. PINE S65E 60 LINKS; 16" W. PINE STUMP S30W 96 LINKS.

B. Description of corner evidence found and/or method applied in restoring or reestablishing corner:

(E4) FOUND AND ACCEPTED A 1" PIPE WITH 4" BRASS MI DEPT. OF CONSERVATION TABLET IN ACCORD WITH BUCKLER'S BT'S (NOW 8" R. PINE AND 14" J. PINE). SCRIBED NEW BLAZES ON THESE TREES AT BH.

(E3) FOUND 1" PIPE WITH 4" BRASS MI DEPT. OF CONSERVATION TABLET PLACED BY BUCKLER IN ACCORD WITH ACCESSORIES NOTED ABOVE. RED PINE IS NOW 24" DIAMETER. REMARKED TOP BLAZE ON BUCKLER'S RED PINE.

(C3) FOUND AND ACCEPTED A 1" PIPE WITH 4" BRASS MI DEPT. OF CONSERVATION TABLET IN ACCORD WITH BUCKLER'S RED PINE (NOW 14"). W. PINE STUMP HAS ROTTED AWAY. REMARKED TOP BLAZE ON BUCKLER'S RED PINE.

C. Description of monument for corner and accessories established to perpetuate locating the position of the corner:

(E4) FOUND 1" PIPE WITH 4" BRASS CAP. 8" R. PINE S38W 73.26'; 14" J. PINE N80W 74.58'; 10" J. PINE N10E 23.8' (BLAZED AND SCRIBED); 8" J. PINE N73E 7.3' (BLAZED AND SCRIBED). DISTANCES WERE MEASURED TO THE FACE OF BASE BLAZES.	(E3) FOUND 1" PIPE WITH 4" BRASS TABLET. 24" R. PINE S75W 67.3'; 24" W. PINE STUMP N80E 20.5'; 24" W. PINE STUMP S49E 22.8'; 8" R. PINE N89W 6.7' (BLAZED AND SCRIBED AT BASE AND BH). DISTANCES SHOWN ARE TO FACE OF BASE BLAZE. PLACED SQUARED WOOD POST ADJACENT TO CORNER.	(C3) FOUND 1" PIPE WITH 4" BRASS TABLET. 14" R. PINE S65E 39.6'; 6" R. PINE N77W 23.1'; 8" R. PINE N41E 32.3'; 6" R. PINE N77E 29.1'. PLACED NEW SQUARED WOOD POST ADJACENT AND A LOCATION POSTER APPROX. 430' NORTH OF CORNER AT ROAD. BLAZED AND SCRIBED MBT'S AT BASE AND BH. DISTANCES ARE TO FACES OF BASE BLAZE.
--	--	--

Signed by Stephan J. Szyszkoski Date 11-25-91
Surveyor's Michigan License No. 33986

FORM APPROVED BY MICHIGAN STATE BOARD OF LAND SURVEYORS, JAN 1987

