

LAND CORNER RECORDATION CERTIFICATE
Filing Requirement of Act 74, Mich. P.A. 1970

For corners in

Mackinac

(County)

Located In:

Corner Code #

1. Public Land Survey

T 42N R 6W 13

T 42N R 6W 64

T R

T R

2. Property Controlling in Section

S T R

S T R

3. Miscellaneous Property in Sec.

S T R

S T R

Register of Deeds Stamp & File Number

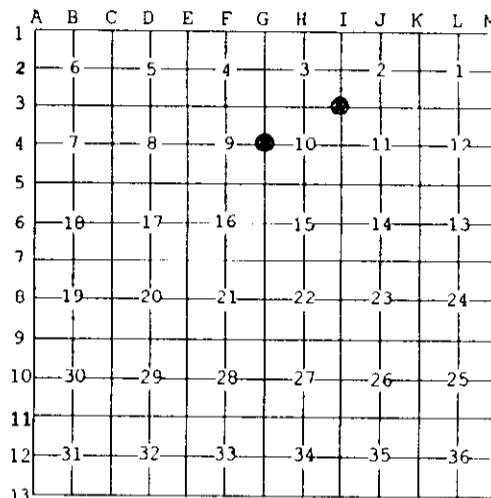
4. Lot No. _____, Recorded Plat _____

5. Private Claims _____

Aug 30 2004

I, Stephan J. Szyszkoski, in a field survey on _____, 19____ do hereby state that under requirements of P.A. 74, Michigan P.A. of 1970, the corner points mentioned in lines 1 and 2 above were in conformance with regulations and rules therefore as required in the current manual of survey instructions of the United States Department of the Interior, Bureau of Land Management or by a decree of a Court of Law and /or that the corner points mentioned in lines 3, 4 and 5 above were in conformance with the rules of the Michigan Board of Land Surveyors or by a Decree of a Court of Law, established, re-established, monumented, recovered, found as expressed below:

NOTE: Not more than 2 corners, all in the same town and range, may be recorded on this certificate.



A. Description of original monument and accessories and/or subsequent restoration:

(I3) Corner common to Sections 2-3-10-11. 1961 - Re-monumented by Billy D. Buckler RLS from notes by Marcus Schaaf, RLS. Set 1" pipe with 4" brass cap. 40" W.Pine stump S45W 56.5 links, 16" Soft Maple N42E 160 links.

(G4) Quarter corner common to Sections 9-10. 1962 - Re-established by Billy D. Buckler RLS midway and on line between Section corners. Set 1" pipe with 4" aluminum cap. 9" B.Cherry N15E 08 links.

B. Description of corner evidence found and/or method applied in restoring or reestablishing corner:

(I3) Recovered the 1961 monument in good condition and at record bearing and distance from the 1961 witness W.Pine stump, still in place but falling apart. The Soft Maple NBT was not recovered. Accepted the monument as found. The monument cap is flush with the ground. The corner lies just north of a road in the grass line.

(G4) Recovered the 1962 monument, in good condition, found at record bearing and distance from the 1962 witness Cherry, now 12" DBH. The monument is 2.2' North and 0.1' west of the position of record. Accepted the monument as a careful and faithful reestablishment of the position of the original corner.

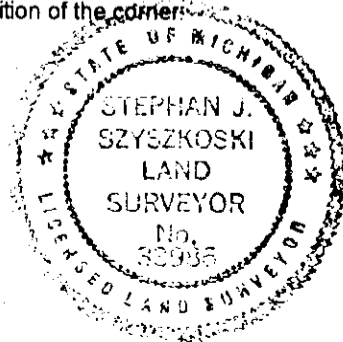
C. Description of monument for corner and accessories established to perpetuate locating the position of the corner:

(I3) Found 1" ID I.pipe with 4" brass MI Dept. of Conservation cap. Blazed, scribed, and set measuring nails in:
 6" Maple S53W 39.45' "S10 NBT"
 6" W.Pine S53E 47.75' "S11 NBT"
 8" Cherry N46E 16.85' "S2 NBT"
 6" W.Pine N08W 22.1' "S3 NBT"

(G4) Found 1" ID I.pipe with 4" alum. MI Dept. of Conservation cap. Blazed, scribed, and set measuring nails in:
 10" W.Birch S77E 16.9' "1/4S NBT"
 3" Maple N30W 17.35' do
 12" Maple N76W 20.8' do
 12" Cherry N21E 5.8' "1/4S" *

Bearings are magnetic. Distances are to nail with tag.

Bearings are magnetic. Distances are to nail with tag. * denotes the 1962 NBT.



Signed by Stephan J. Szyszkoski
 Surveyor's Michigan License No. 33986

Date 9/15/04