

LAND CORNER RECORDATION CERTIFICATE
Filing Requirement of Act 74, Mich. P.A. 1970

For corners in

Mackinac

(County)

Located In:

Corner Code #

1. Public Land Survey	T <u>42N</u> R <u>6W</u>	<u>I4</u>
	T ___ R ___	_____
	T ___ R ___	_____
	T ___ R ___	_____
2. Property Controlling in Section	S <u>10</u> T <u>42N</u> R <u>6W</u>	<u>12</u>
	S ___ T ___ R ___	_____
3. Miscellaneous Property in Sec.	S ___ T ___ R ___	_____
	S ___ T ___ R ___	_____

Register of Deeds Stamp & File Number

4. Lot No. _____, Recorded Plat _____

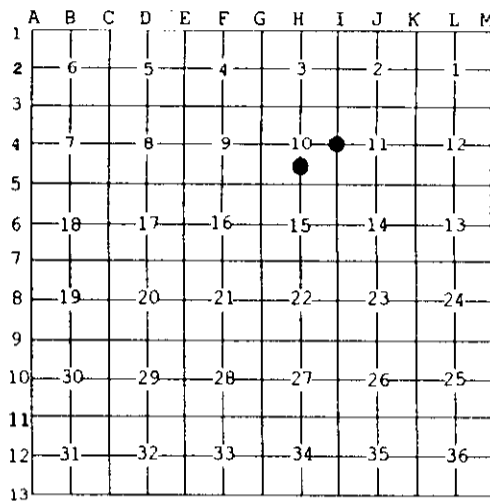
5. Private Claims _____

12 Aug 23 2004

I4 Aug 30 2004

I, Stephan J. Szyszkoski, in a field survey on _____, 19____ do hereby state that under requirements of P.A. 74, Michigan P.A. of 1970, the corner points mentioned in lines 1 and 2 above were in conformance with regulations and rules therefore as required in the current manual of survey instructions of the United States Department of the Interior, Bureau of Land Management or by a decree of a Court of Law and /or that the corner points mentioned in lines 3, 4 and 5 above were in conformance with the rules of the Michigan Board of Land Surveyors or by a Decree of a Court of Law; established, re-established, monumented, recovered, found as expressed below:

NOTE: Not more than 2 corners, all in the same town and range, may be recorded on this certificate.



A. Description of original monument and accessories and/or subsequent restoration:

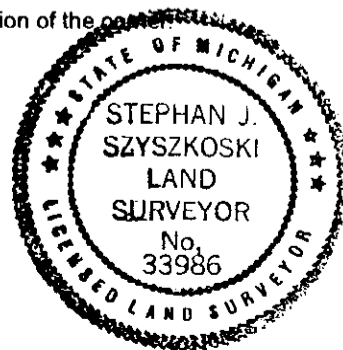
(I4) Quarter corner common to Sections 10-11. 1845 - Established by H.Brevoort: North between Sections 10 and 11... 40.00 Set quarter Section post. Beech 10 N45W 20, Birch 20 S75E 12. ... 80.00 A Birch 18" in dia. for post Corner sections 2-3-10-11.
 (I2-Sec. 10) South 1/16 corner Section 10. Not established in the original survey.

B. Description of corner evidence found and/or method applied in restoring or reestablishing corner:

(I4) The original post and accessories were not recovered. Reestablished the corner midway and on line between Section corners 2585.95' north and south.
 (I2-Sec. 10) Established the corner midway and on a straight line between Quarter corner 1296.52' south and Center of Section (unmonumented) 1296.52' north. The position for the corner falls 3' west of the center of a road.

C. Description of monument for corner and accessories established to perpetuate locating the position of the corner:

(I4) Set 1"IDx36" I.pipe with 4" alum. MDNR cap. Blazed, scribed, and set measuring nails in:	(12) Set 1"IDx36" I.pipe with plastic MDNR cap, buried. Blazed, scribed, and set measuring nails in:
6" Cherry N53W 1.45' "1/4S N8T"	10" Maple S15W 68.7' "S1/16 BT"
10" Hemlock S40W 22.4' do	5" Spruce S29W 28.95' do
12" Maple S37E 48.6' do	6" Cherry N62W 16.0' do
6" Beech N80E 35.65' do	6" Maple in clump S68E 26.85' do
Set cedar post adjacent. Bearings are magnetic. Distances are to nail with tag.	Bearings are magnetic. Distances are to nail with tag.



Signed by Stephan J. Szyszkoski
 Surveyor's Michigan License No. 33986

Date 9/15/04