

MICHIGAN
DEPARTMENT OF CONSERVATION
FORESTRY DIVISION

LAND CORNER RECORD

T. 42 N.R. 7 W.

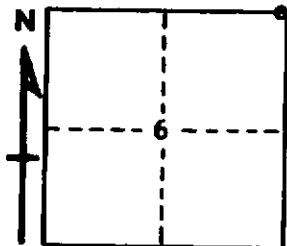
Mackinac COUNTY

DESCRIPTION OF CORNER Closing Corner for Sections 5 and 6 on North boundary of Township.

CORNER MONUMENT 1" Iron pipe with 4" Aluminum Cap insertec in 1½" pipe.

DATE MONUMENT PLACED AND WITNESSED 5/1/63.

WITNESSES TO CORNER..... 9" Cedar (C.C.) (N.B.T.) S. 54° W., 16 Lks.



CIRCLE CORNER REGISTERED

AND

DESCRIPTION IN DETAIL AS TO HOW CORNER WAS LOCATED AND IDENTIFIED OR RESTORED.

This Corner was replaced from 1½" iron pipe and wood post and cedar stump in proper Bearing and distance.

SURVEYOR'S SEAL

Billy D. Buckler

SIGNED

Billy D. Buckler
REGISTERED LAND SURVEYOR

DATE

8-5-63