

MICHIGAN
DEPARTMENT OF CONSERVATION
FORESTRY DIVISION

LAND CORNER RECORD

T. 42 N.R. 7N

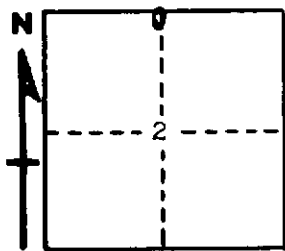
Macrina COUNTY

DESCRIPTION OF CORNER 1/4 Corner on North side Section 2, T42N 17W

CORNER MONUMENT 1" Iron Pipe with 4" Aluminum Cap

DATE MONUMENT PLACED AND WITNESSED 2/21/64 with Forestry Aide, Burnis

WITNESSES TO CORNER..... 9" Y. Birch ($\frac{1}{2}$ S BT) S08⁰E, 75 Lks.



9" H. Maple ($\frac{1}{2}$ S BT) S41⁰W 72 $\frac{1}{2}$ Lks.

AND

CIRCLE CORNER REGISTERED

DESCRIPTION IN DETAIL AS TO HOW CORNER WAS LOCATED AND IDENTIFIED OR RESTORED.

This Corner was placed midway and on line between Section Corner 1/2 mile to East and closing corner for Sections 2 & 3 to West.

SURVEYOR'S SEAL

SIGNED Frank J. Bray DATE 3/15/1964
REGISTERED LAND SURVEYOR