

MICHIGAN
DEPARTMENT OF CONSERVATION
FORESTRY DIVISION

LAND CORNER RECORD

T. 42N N.R. 7W

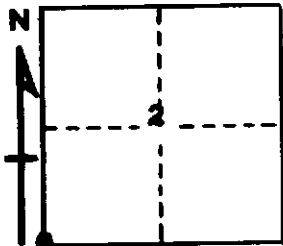
Mackinac COUNTY

DESCRIPTION OF CORNER Sec. Cor. common to Secs. 2-3-10-11

CORNER MONUMENT "T" Iron, buried in road intersection.

DATE MONUMENT PLACED AND WITNESSED 7-8-64

WITNESSES TO CORNER..... 4" Concrete Monument, West, 50.0'



CIRCLE CORNER REGISTERED

AND

DESCRIPTION IN DETAIL AS TO HOW CORNER WAS LOCATED AND IDENTIFIED OR RESTORED.

This corner recorded as replaced by E. A. Sainie, R.L.S., who found an iron placed by D. A. Brotherton about 1916. Brotherton noted this corner while surveying the road alignment for the Mackinac County Trunkline roads.

SURVEYOR'S SEAL

SIGNED *Billy D. Buckler*
Billy D. Buckler
REGISTERED LAND SURVEYOR

DATE 1-22-71