

MICHIGAN  
DEPARTMENT OF CONSERVATION  
FORESTRY DIVISION

# LAND CORNER RECORD

T. 42N N.R. 7N

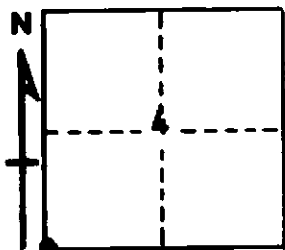
Mackinac COUNTY

DESCRIPTION OF CORNER Sec. Cor. common to Secs. 4-5-8-9

CORNER MONUMENT IRON FENCE POST 5' high

DATE MONUMENT PLACED AND WITNESSED 1-11-71

WITNESSES TO CORNER..... 9" Cedar (S4 NBT) N70°E 50.2'



9" Cedar (S8 NBT) S18°W 22.2'

Corner lies 20.0' West of road and 40.0' South of a side road.

AND

CIRCLE CORNER REGISTERED

DESCRIPTION IN DETAIL AS TO HOW CORNER WAS LOCATED AND IDENTIFIED OR RESTORED.

This corner re-witnessed as set by E.A. Sainie, R.L.S.  
Found iron fence post in place with old wood post 25.0' to south. Old fence line running east from this post.  
Location checks well with other corners in area.

SURVEYOR'S SEAL

SIGNED Billy D. Buckler DATE 1-25-71  
REGISTERED LAND SURVEYOR