

MICHIGAN
DEPARTMENT OF CONSERVATION
FORESTRY DIVISION

LAND CORNER RECORD

T. 42N N. R. 7W

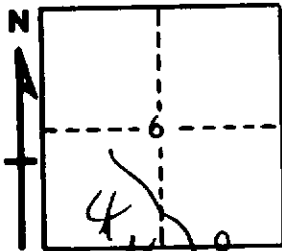
Mackinac COUNTY

DESCRIPTION OF CORNER Meander corner bet. Secs. 6-7, on north shore of Lake Michigan

CORNER MONUMENT 1" pipe with 4" aluminum cap.

DATE MONUMENT PLACED AND WITNESSED 9-24-70

WITNESSES TO CORNER..... 7" Cedar (M.C. NBT) N42°E 9.1'



7" Cedar (M.C. NBT) S35°W 14.4'

8" Cedar (M.C. NBT) N34°W 20.4'

AND

DESCRIPTION IN DETAIL AS TO HOW CORNER WAS LOCATED AND IDENTIFIED OR RESTORED.

Corner is at north side of a 13" Spruce tree.

This corner replaced from one original cedar B.T., bearing S68°E 34 lks. Tree is now 16" and still green.

Found part of face with scribe marks in evidence.

Found blazes with signature of B. Slater, dated 11-27-32.

Corner lies 100' west of a foot trail.

SURVEYOR'S SEAL

SIGNED Billy D. Buckler DATE 10-19-70
REGISTERED LAND SURVEYOR