

MICHIGAN
DEPARTMENT OF CONSERVATION
FORESTRY DIVISION

LAND CORNER RECORD

T. 42N N.R. 7W

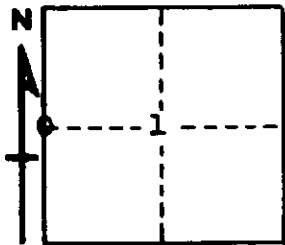
Mackinac COUNTY

DESCRIPTION OF CORNER ¼ Cor. bet. Secs. 1-2

CORNER MONUMENT 1" pipe with 4" aluminum cap

DATE MONUMENT PLACED AND WITNESSED 9-18-70

WITNESSES TO CORNER..... 15" Hard Maple (¼S NBT) S60°E 8.1'



8" B. Cherry (¼S NBT) N74°W 11.0'

AND

CIRCLE CORNER REGISTERED

DESCRIPTION IN DETAIL AS TO HOW CORNER WAS LOCATED AND IDENTIFIED OR RESTORED.

Corner lies 12' north of woods road.

This corner re-established on line and by single proportionate measure, between two Sec. Corners.

Found no evidence of original Beech witnesses.

Found several old blazes on line to south of corner.

SURVEYOR'S SEAL

SIGNED Billy D. Buckler DATE 10-19-70
REGISTERED LAND SURVEYOR