

MICHIGAN
DEPARTMENT OF CONSERVATION
FORESTRY DIVISION

LAND CORNER RECORD

T. 42N N.R. 7W

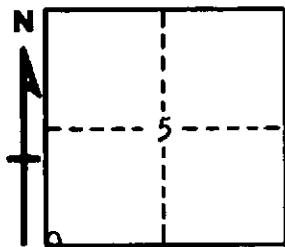
Mackinac COUNTY

DESCRIPTION OF CORNER Sec. Cor. common to Secs. 5-6-7-8

CORNER MONUMENT 1" pipe with 4" aluminum cap.

DATE MONUMENT PLACED AND WITNESSED 10-23-70

WITNESSES TO CORNER..... 18" Cedar (S7 NBT) S58°W 31.7'



10" Cedar (S5 NBT) N47°E 62.6'

AND

CIRCLE CORNER REGISTERED

DESCRIPTION IN DETAIL AS TO HOW CORNER WAS LOCATED AND IDENTIFIED OR RESTORED.

This corner re-established at record distance from an original meander corner, 5.93 chains west and a closing corner, one mile north. Found no remaining evidence of original (Balsam) witnesses at this corner.

Position checks well with lake shore to south and east.

SURVEYOR'S SEAL

SIGNED Billy D. Buckler
Billy D. Buckler
REGISTERED LAND SURVEYOR

DATE 12-2-70