

#42

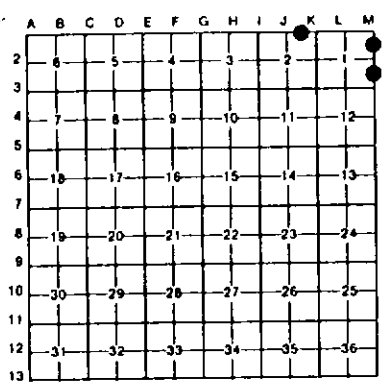
LAND CORNER RECORDATION CERTIFICATE
Filing Requirement of Act 74, Mich. P.A. 1970

For corners in
Mackinac

(County)	Located in:	Corner Code #/
1. Public Land Survey	T ___ R ___	_____
	T ___ R ___	_____
	T ___ R ___	_____
	T ___ R ___	_____
2. Property Controlling in Section	S ___ T ___ 42N R 7W	2
	S ___ T ___ 42N R 7W	7
3. Miscellaneous Property in Sec.	S ___ T ___ 42N R 7W	14
	S ___ T ___ R ___	_____

Register of Deeds Stamp & File Number

4. Lot No. _____ Recorded Plat _____
 5. Private Claims _____

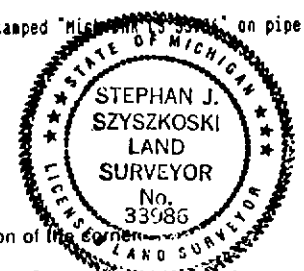


I, Stephan J. Szyszkoski, in a field survey on September 17, 1992, 19____, do hereby certify that under requirements of P.A. 74, Michigan P.A. of 1970, the corner points mentioned in lines 1 and 2 above were in conformance with regulations and rules therefore as required in the current manual of survey instructions of the United States Department of the Interior, Bureau of Land Management or by a decree of a Court of Law and/or that the corner points mentioned in lines 3, 4 and 5 above were in conformance with the rules of the Michigan Board of Land Surveyors or by a Decree of a Court of Law, established, re-established, monumented, re-monumented, recovered, found as expressed below:

NOTE: Not more than 4 corners, all in the same town and range, may be recorded on this certificate.

- A. Description of original monument and accessories and/or subsequent restoration:
- (2) east 1/16 corner on north side of Section 2, T42N-R7W. Corner previously recorded by David B. Babbitt in 1982 as monumented by a DNR monument with the following accessories: 6" H. Maple N43E 5.1', 8" Beech N14W 14.1', 18" Hemlock S25W 38.2', 12" Y. Birch S38E 52.4'.
 - (7) North 1/16 corner between Sections 1 T42N-R7W and 6 T42N-R6W. Corner previously recorded by Billy D. Buckler in 1972 as monumented by a buried 1" pipe with 4" cap with the following NBTs: 16" W. Pine stump N41E 20.5', 16" W. Pine stump N46W 60.2'
 - (14) South 1/16 between Sections 1 T42N-R7W and 6 T42N-R6W. Corner previously recorded by Billy D. Buckler as monumented by a buried DNR monument in 1964 with the following NBTs: 14" H. Maple S60W 28.9', 8" H. Maple N80E 22.0'.

- B. Description of corner evidence found and/or method applied in restoring or reestablishing corner:
- (2) Recovered a 1" pipe, below the surface, at record bearing and distance from the bearing trees noted above. Placed a plastic cap stamped "Mich DNR LS 33986" on said pipe and marked 1 new bearing tree as described below.
 - (7) Found a bent 1" iron pipe at record bearing and distance from the Pine stump N41E noted above. Could not remove the pipe. Drove a new 1" pipe capped with a plastic cap stamped "Mich DNR LS 33986" at the location of the corner and marked new bearing trees as described below.
 - (14) Recovered buried 1" pipe at record bearing and distance from record NBTs. Placed plastic cap stamped "Mich DNR LS 33986" on pipe, placed measuring nails and tags in the record NBTs and marked 2 new NBTs as described below.



- C. Description of monument for corner and accessories established to perpetuate locating the position of the corner:
- | | | |
|---|---|--|
| (2) 1" pipe with plastic RLS cap. Marked new BN blazes and set measuring nails with tags in the record NBTs:
6" H. Maple N43E 5.4'
8" Beech N14W 14.5'
8" Hemlock S25W 38.5'
Blazed, scribed, and placed a measuring nail with tag in the following new bearing tree:
8" Hemlock S62W 49.05' | (7) 1" pipe with plastic RLS cap driven below the ground surface. Blazed, scribed, and set measuring nails in the following new bearing trees:
6" W. Pine N80W 43.1'
4" Spruce N08W 54.2'
14" W. Pine N17E 60.0'
5" W. Pine N63E 34.4'
Corner falls in west wheel track. | (14) A buried 1" pipe with plastic RLS cap. Set measuring nails and tags in the record NBTs:
14" H. Maple S60W 28.85'
8" H. Maple N80E 22.0'
Blazed, scribed and set measuring nails with tags in the following NBTs:
8" Sugar S40E 26.15'
8" Sugar N30W 15.75'
Found an iron pipe N62W, 16.6' |
|---|---|--|

Signed by Stephan J. Szyszkoski
 Surveyor's Michigan License No. 33986

Date 1-27-93