

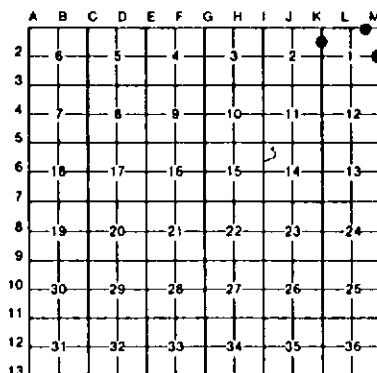
LAND CORNER RECORDATION CERTIFICATE
Filing Requirement of Act 74, Mich. P.A. 1970

For corners in Mackinac (County)	Located In:	Corner Code #/1
1. Public Land Survey	T 42N R 7W	M2
	T R	
	T R	
	T R	
2. Property Controlling in Section	S 1 T 42N R 7W	2
	S 1 T 42N R 7W	3
3. Miscellaneous Property in Sec.	S T R	
	S T R	

Register of Deeds Stamp & File Number

4. Lot No. _____, Recorded Plat _____
 5. Private Claims _____

I, Stephan J. Szyszkoski, in a field survey on August 25, 1993, 19_____, do hereby certify that under requirements of P.A. 74, Michigan P.A. of 1970, the corner points mentioned in lines 1 and 2 above were in conformance with regulations and rules therefore as required in the current manual of survey instructions of the United States Department of the Interior, Bureau of Land Management or by a decree of a Court of Law and/or that the corner points mentioned in lines 3, 4 and 5 above were in conformance with the rules of the Michigan Board of Land Surveyors or by a Decree of a Court of Law, established, re-established, monumented, re-monumented, recovered, found as expressed below:



NOTE: Not more than 4 corners, all in the same town and range, may be recorded on this certificate.

A. Description of original monument and accessories and/or subsequent restoration:

- (M2) East 1/4 corner, Section 1. Corner previously reestablished in 1964 and recorded in 1972 by Billy D. Buckler, ALS as follows: Corner reestablished midway and on line between two Section corners. Found no evidence of the original. Corner lies 6.0' west of trail road. Placed 1" pipe with 4" aluminum cap at corner. New bearings: 12° W. Spruce N36W 46.9', 12° W. Spruce N28E 61.0'. Found no subsequent record.
- (2-Sec. 1) East 1/16 corner between Sections 1 T42N-R7W and 36 T43N-R7W. Corner previously established in 1967 by Frank J. Bray, ALS at midpoint and on line between Section corner east and 1/4 corner west. Bray placed 1 1/4" iron pipe in centerline of woods road and marked the following accessories: 7" J. Pine S56W 79 lns, 5" W. Pine S60E 116 lns. Found no subsequent record.
- (3-Sec. 1) North 1/16 corner between sections 1-2. Corner previously established in 1970 by Billy D. Buckler who placed a 1" pipe with 4" aluminum cap at the corner and marked the following accessories: 10" R. Pine N49E 24.8', 9" J. Pine N10W 17.4'.

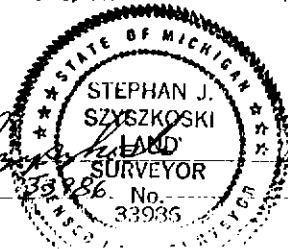
B. Description of corner evidence found and/or method applied in restoring or reestablishing corner:

- (M2) Buckler's 1964 monument was not recovered. W. Spruce NBT N36W still stands but the other spruce (and the monument) have been removed by road construction. Reestablished the corner midway and on a straight line between Section corners north and south. At the position for the corner, I buried a 1"x32" iron pipe capped with a yellow plastic cap stamped Mich D.N.R. LS 33986. From the corner reestablished, the remaining 1964 NBT, now a 16" W. Spruce, bears N36W, 46.1' to a nail placed in a side blaze.
- (2-Sec. 1) Did not recover the monument or accessories noted above. Logging activity has removed the BTs, and Bray's pipe has apparently been destroyed by road construction. Reestablished the corner midway and on a straight line between 1/4 corner 1315.5' west and Section corner 1315.5' east. At the position for the corner, I buried a 1"x32" iron pipe capped with a yellow plastic cap stamped "MICH DNR LS 33986".
- (3-Sec. 1) Buckler's monument and Jack Pine BT N10W both destroyed by road construction. Reestablished the corner on a straight line between 1/4 corner 1327.89' south and section corner 1335.85' north, being 20 chains proportionate measure north of the 1/4 corner. Recovered Buckler's remaining BT, placed measuring nail in a side blaze, and remeasured as follows: 14" R. Pine N49E 25.6'. At the position for the corner, I buried a 1"x32" iron pipe capped with a yellow plastic cap stamped "MICH DNR LS 33986".

C. Description of monument for corner and accessories established to perpetuate locating the position of the corner:

- | | | |
|---|---|--|
| (M2) Set a 1"x32" iron pipe with plastic cap.
Blazed, scribed, and set measuring nails in the following new bearing trees:
10" Spruce S15W 102.25' (Unblazed)
3" Spruce S43W 58.95' "1/4S NBT"
10" Spruce N73W 18.85' "1/4S NBT"
centerline of trail is 6' east. | (2) Set a 1" pipe with plastic cap
Blazed, scribed, and placed measuring nails in the following bearing trees:
3" Balsam S73E 50.95' "1/16S BT"
4" J. Pine S25E 22.45' "1/16S BT"
4" J. Pine S45W 43.6' "1/16S BT"
5" Spruce N40W 29.2' "1/16S BT" | (3) Set 1" pipe with plastic cap.
Blazed, scribed, and placed measuring nails in the following bearing trees:
6" R. Pine N35E 20.4' "1/16S BT"
10" R. Pine N33E 28.45' "1/16S BT"
10" R. Pine N04W 85.8' "1/16S BT"
Corner falls in a W-S trail road. |
|---|---|--|

Signed by Stephan J. Szyszkoski
 Surveyor's Michigan License No. _____



Date 10-14-93