

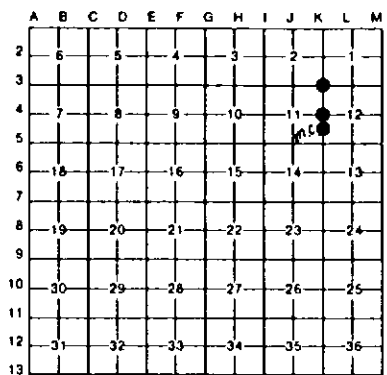
**LAND CORNER RECORDATION CERTIFICATE**  
**Filing Requirement of Act 74, Mich. P.A. 1970**

For corners in  
Mackinac  
(County)

	Located In:	Corner Code -#
1. Public Land Survey	T 42N R 7W	K3
	T 42N R 7W	MC K4-K5
	T 42N R 7W	K4
	T R	
2. Property Controlling in Section	S T R	
	S T R	
3. Miscellaneous Property in Sec.	S T R	
	S T R	

Register of Deeds Stamp & File Number

4. Lot No. \_\_\_\_\_, Recorded Plat \_\_\_\_\_  
 5. Private Claims \_\_\_\_\_



I, Stephan J. Szyszkoski, in a field survey on September 01, 1993, 19\_\_\_\_ do hereby certify that under requirements of P.A. 74, Michigan P.A. of 1970, the corner points mentioned in lines 1 and 2 above were in conformance with regulations and rules therefore as required in the current manual of survey instructions of the United States Department of the Interior, Bureau of Land Management or by a decree of a Court of Law and/or that the corner points mentioned in lines 3, 4 and 5 above were in conformance with the rules of the Michigan Board of Land Surveyors or by a Decree of a Court of Law, established, re-established, monumented, re-monumented, recovered, found as expressed below.

**NOTE: Not more than 4 corners, all in the same town and range, may be recorded on this certificate.**

**A. Description of original monument and accessories and/or subsequent restoration:**

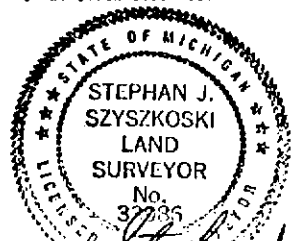
(K3) Section corner common to Sections 1-2-11-12. Corner re-witnessed and recorded in 1990 by Gerald Wiggins, RLS as follows: 1" pipe with plastic RLS cap referenced by pipe line sign, N08E 30.73', power pole N59W 44.78', 12" Maple N45E 79.0', 6" W. Birch South 82.2'. Found no subsequent record.  
 (MC between K4 and K5) Meander corner between sections 11-12. Corner previously monumented and recorded by Gerald Wiggins, RLS, in 1990. Wiggins set a 1" pipe with a 4" aluminum MDNR tablet and the following NBTs: 28" Hemlock N20W 23.5', 8" Cedar N20E 13.4', 10" Cedar N65E 7.9', 10" Cedar N70W 12.6'.  
 (K4) Quarter corner common to Sections 11-12. Corner previously reestablished and recorded by Gerald Wiggins, RLS, in 1990 as follows: Set DNR monument witnessed by 12" Maple N18E 33.85', 6" Beech S87E 24.8', 8" Beech S03W 19.05', 14" Maple S59W 14.7'. Found no subsequent record.

**B. Description of corner evidence found and/or method applied in restoring or reestablishing corner.**

(K3) Found and accepted Wiggins' pipe and accessories as recorded. Placed nails and tags in the two NBTs noted in the 1990 record and remeasured as shown below.  
 (MC between K4 and K5) Found and accepted monument placed by Wiggins at record bearing and distance from the 1990 accessories. Placed measuring nails with tags in the NBTs and remeasured as shown below.  
 (K4) Found and accepted Wiggins' monument at record bearing and distance from the 1990 accessories. Placed measuring nails with tags in the 1990 NBTs and remeasured as shown below.

**C. Description of monument for corner and accessories established to perpetuate locating the position of the corner.**

(K3) 1" pipe with plastic RLS cap.	(MC K4-K5) Fd. 1" pipe with 4" cap	(K4) 1" pipe with 4" MDNR cap
12" Maple N45E 79.25'	28" Hemlock N20W 24.0'	12" Maple N18E 34.33'
6" W. Birch South 82.4'	10" Cedar N20E 13.75'	6" Beech S87E 25.25'
	12" Cedar N65E 8.4'	8" Beech S03W 19.2'
	12" Cedar N70W 13.2'	14" Maple S59W 15.2'
	5" squared cedar post adjacent.	Distances are to nails with tags



Signed by Stephan J. Szyszkoski

Date 10-14-93

Surveyor's Michigan License No. 33986