

11

LAND CORNER RECORDATION CERTIFICATE
Filing Requirement of Act 74, Mich. P.A. 1970

For corners in

County	Located In	Corner Code #/
Mackinac	T 42N R 11W	G12
	T 42N R 11W	G11
	T 42N R 11W	F11
1 Public Land Survey	T 42N R 11W	G12
2 Property Controlling in Section	S T R	
3 Miscellaneous Property in Sec	S T R	
4 Lot No	Recorded Plat	
5 Private Claims		

Register of Deeds Stamp & File Number

I, Stephan J. Szyszkoski, in a field survey on October 27, 1992, 1992 do hereby certify that under requirements of P.A. 74 Michigan P.A. of 1970, the corner points mentioned in lines 1 and 2 above were in conformance with regulations and rules therefore as required in the current manual of survey instructions of the United States Department of the Interior, Bureau of Land Management or by a decree of a Court of Law and/or that the corner points mentioned in lines 3, 4 and 5 above were in conformance with the rules of the Michigan Board of Land Surveyors or by a Decree of a Court of Law, established, re-established, monumented, re-monumented, recovered found as expressed below.

NOTE: Not more than 4 corners, all in the same town and range, may be recorded on this certificate.

A. Description of original monument and accessories and/or subsequent restoration:

(G12) Quarter corner common to Sections 33 & 34, T42N-R11W. Corner established by U.S. Deputy Surveyor William Ives, 1850. Original bearing trees: Beech 12 N53W 13, Beech 8 S32E 20. Found no subsequent record of perpetuation. In 1969, Michigan Department of Natural Resources surveyors found a 1" iron pipe projecting 1 ft. above ground in a N-S fence line.

(G11) Section corner common to sections 27-28-33-34, T42N-R11W. Corner established by U. S. Deputy Surveyor William Ives, 1850. Original bearing trees: Beech 8 N23E 64, Beech 15 S30W 70. Found no record of subsequent perpetuation. In 1969, Michigan Dept. of Natural Resources surveyors found the corner monumented by a 1" pipe, projecting 1 foot above ground in a N-S fence.

(F11) Quarter corner common to sections 28-33, T42N-R11W. Corner established by U.S. Deputy Surveyor William Ives, 1850. Original bearing trees: Black Ash 16 N81W 37, Beech 7 S40E 23. Original line call: 35.00 Stream 10 L. course S.E. Found no record of subsequent perpetuation.

B. Description of corner evidence found and/or method applied in restoring or reestablishing corner.

(G12) Found and accepted a 1" iron pipe, projecting 12 inches above ground in line with a 50+ year old blaze line to west, and in an old N-S fence line, the remains of which were traced for 2 miles north from the southeast corner of section 33. replaced the pipe with a 1"x32" painted iron pipe capped with a 4" dia. cast aluminum MDNR tablet. The position of the corner is approximately 20' North and 80' West of the proportionate position.

(G11) Found no monumentation at the corner position, original bearing trees and line trees on lines north, east, and west were not recovered. Re-monumented the corner at the position of the pipe found in 1969 by the MDNR survey crew as determined from their traverse measurements. From the corner reestablished, found recorded section corners 5250.11' west and 5386.75' south. Distance north one mile to a 4-way trail intersection checks well with original record. Found no evidence of corners 1/2 mile and 1 mile to east. Corner lies about 250' east of the east end of a small clearing.

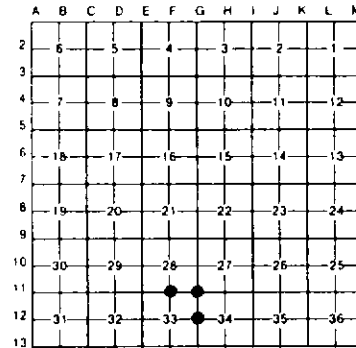
(F11) Found no monumentation at corner position. Original bearing trees not recovered. Noted stream does not appear to be an accurate call as its use as control yields a corner position nearly 2 chains east of the proportionate position. Reestablished the corner equidistant between section corners of record 1/2 mile east and west and in the remains of a very old E-W fence line. An old edge-of-clearing line extends south from this position.

C. Description of monument for corner and accessories established to perpetuate locating the position of the corner:

(G12) Set 1"x32" pipe with 4" aluminum MDNR cap.
Blazed, scribed, and set measuring nails in the following new bearing trees:
8" N. Birch N51W 25.4'
8" Maple N58E 16.9'
6" Maple S34E 22.85'
8" Maple S22W 33.25'
Placed wooden fence post adjacent to monument.

(G11) Set 1"x32" painted iron pipe capped with a 4" cast aluminum MDNR tablet in an old N-S fence line.
Blazed, scribed, and set measuring nails in the following new bearing trees:
6" Sugar N30W 33.56' mrd "S28 NBT"
8" Sugar N24E 17.0' mrd "S27 NBT"
14" Sugar S18E 23.72' mrd "S34 NBT"
7" Sugar S35W 34.5' mrd "S33 NBT"

(F11) Set 1"x32" painted iron pipe capped with a 4" dia. cast aluminum MDNR tablet.
Blazed, scribed, and set measuring nails in the following new bearing trees:
13" Sugar N55W 6.5'
6" Sugar N35E 13.8'
6" Sugar S79E 10.0'
9" Sugar S12W 30.6'



Signed by Stephan J. Szyszkoski Date 12-7-92
Surveyor's Michigan License No 33986

