

LAND CORNER RECORDATION CERTIFICATE
Filing Requirement of Act 74, Mich. P.A. 1970

For corners in
Hackinac

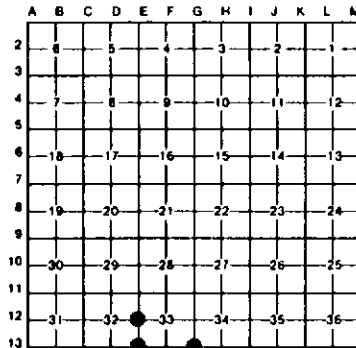
(County)	Located In:	Corner Code #/
1. Public Land Survey	T 42N R 11W	R12
	T 42N R 11W	R13
	T 42N R 11W	G13
2. Property Controlling in Section	S T R	
	S T R	
3. Miscellaneous Property in Sec	S T R	
	S T R	

Register of Deeds Stamp & File Number

4. Lot No. _____, Recorded Plat _____
5. Private Claims _____

I, Stephan J. Szyszkoski, in a field survey on October 27, 1992, 19____, do hereby certify that under requirements of P.A. 74, Michigan P.A. of 1970, the corner points mentioned in lines 1 and 2 above were in conformance with regulations and rules therefore as required in the current manual of survey instructions of the United States Department of the Interior, Bureau of Land Management or by a decree of a Court of Law and/or that the corner points mentioned in lines 3, 4 and 5 above were in conformance with the rules of the Michigan Board of Land Surveyors or by a Decree of a Court of Law; established, re-established, monumented, re-monumented, recovered, found as expressed below:

NOTE: Not more than 4 corners, all in the same town and range, may be recorded on this certificate.

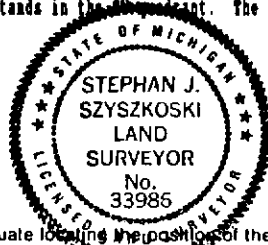


A. Description of original monument and accessories and/or subsequent restoration:

- (R12) Quarter corner common to Sections 32 and 33, T42N-R11W. Corner previously reestablished and recorded by Billy D. Buckler in 1969 as monumented by a 5/8" iron pin and witnessed by the following new bearing trees: 9" Hard Maple (1/4S NBT) S55W 36.4', 9" Hard Maple (1/4S NBT) S80E 43.4'.
- (R13) Section corner common to Sections 33-34, T42N R11W, and Sections 4-5, T41N-R11W. Corner Previously recorded by Billy D. Buckler in 1969 as a 5/8" iron in a monument box in road intersection.
- (G13) Section corner common to sections 33 & 34, T42N-R11W, and sections 3 & 4, T41N-R11W. Corner previously recorded by Billy D. Buckler in 1974 as monumented by a 1" pipe with a 4" aluminum cap and witnessed by the following NBTs: 8" Aspen, S35E, 53.5', 8" Aspen, S76E, 35.1'.

B. Description of corner evidence found and/or method applied in restoring or reestablishing corner

- (R12) Found and accepted a 5/8" iron pin in the centerline of S. Gould City road at record bearing and distance from Buckler's NBTs. Established one new bearing tree as described below.
- (R13) Found and accepted a 5/8" dia. iron rod in monument box as described by Buckler. Established four new witnesses.
- (G13) Found and accepted a 1" pipe with 4" aluminum Michigan Dept. of Natural Resources cap at record distance from Buckler's NBT aspen, S76E. Noted that the record bearing of this NBT is erroneous and it stands in the foreground. The second NBT has been cut. Marked three new witness trees as described below.



C. Description of monument for corner and accessories established to perpetuate location of the corner.

- | | | |
|---|---|---|
| (R12) Found 5/8" iron pin. Blazed, scribed, and set measuring nail in the following new bearing tree: 6" W. Birch S55E 66.35' mrd "1/4S NBT" Scribed and set measuring nails in the record NBTs as follows:
11" Sugar, S80E 43.5' mrd "1/4s"
12" Sugar, S55W 36.4' mrd "1/4s"
A 4"x4" wood post with location poster bears East 33' from the corner. | (R13) Found 5/8" iron in monument box. Street sign S54W 41.7' Blazed, scribed, and set measuring nails in the following new bearing trees:
9" W. Birch, S66W 74.35' mrd "NBT"
8" Sugar, East 36.0' mrd "S33 NBT"
4" Sugar, S50E 51.56' mrd "S4 NBT"
Monument box is in the centerline of South Gould City road. | (G13) 1" pipe with 4" aluminum cap. Blazed, scribed, and set measuring nails in the following new bearing trees:
12" Aspen, N66W 38.7'
3" Balsam, N07W 28.2'
4" Balsam, S48E 24.6'
remarked top blaze and set measuring nail in the remaining 1974 NBT:
10" Aspen, S80W 35.35'
A wood fence post is adjacent to the monument. |
|---|---|---|

Signed by Stephan J. Szyszkoski Date 12-7-92
Surveyor's Michigan License No. 33986