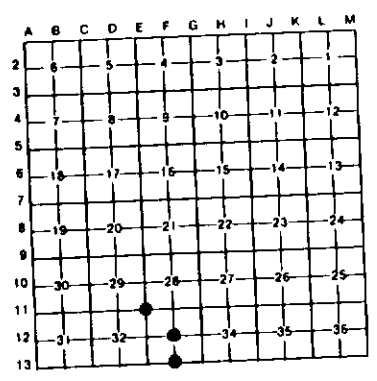


#13

LAND CORNER RECORDATION CERTIFICATE Filing Requirement of Act 74, Mich. P.A. 1970

For corners in	Located in:	Corner Code ##
<u>Mackinac</u> <small>(County)</small>		
1. Public Land Survey	T 42N R 11W	E11
	T 42N R 11W	F13
	T 42N R 11W	F12
	T R	
2. Property Controlling in Section	S T R	
	S T R	
3. Miscellaneous Property in Sec.	S T R	
	S T R	
4. Lot No. _____ Recorded Plat _____		
5. Private Claims _____		

Register of Deeds Stamp & File Number



I, Stephan J. Szyszkoski, in a field survey on F12 November 30, 1992, F13 October 27, 1992, E11 October 27, 1992, 19____, do hereby certify that under requirements of P.A. 74, Michigan P.A. of 1970, the corner points mentioned in lines 1 and 2 above were in conformance with regulations and rules therefore as required in the current manual of survey instructions of the United States Department of the Interior, Bureau of Land Management or by a decree of a Court of Law and/or that the corner points mentioned in lines 3, 4 and 5 above were in conformance with the rules of the Michigan Board of Land Surveyors or by a Decree of a Court of Law, established, re-established, monumented, re-monumented, recovered, found as expressed below:

NOTE: Not more than 4 corners, all in the same town and range, may be recorded on this certificate.

A. Description of original monument and accessories and/or subsequent restoration.
 (E11) Section corner common to Sections 28-29-32-33. Corner previously recorded by Billy D. Buckler in 1969 as monumented by a 5/8" iron in monument box in the center of a N-S road and in line with a fence to the east. No witnesses were recorded. Mackinac County Road Commission plans ca. 1964 show 3/8" iron pin at corner at Sta. 106+95.75 with the following witnesses: N85E SW cor. bldg 51.75', S35W Nail in fence post 61.21', N45W nail in fence post 41.91', Sta. 106+72 fence line east (stationing increases to south).
 (F13) Quarter corner common to section 33, T42N-R11W and section 4, T41N-R11W. Corner previously recorded by Billy D. Buckler in 1974 as reestablished midway and on line between section corners east and west. Recorded as a 1" pipe with a 4" aluminum cap witnessed by: 10" S. Maple S13W 29.7', 8" S. Maple S77E 35.3'.
 (F12) Center of Section 33. Corner not established in original survey. Found no subsequent record.

B. Description of corner evidence found and/or method applied in restoring or reestablishing corner.
 (E11) Found and accepted a 5/8" iron rod in monument box in accord with record. Did not find 3/8" iron noted on Rd. Commission plans but it appears that it was located approximately 24' south of the corner.
 (F13) Found recorded monument as described at record bearing and distance from the 1974 NBT's. Determined the position of the monument to be approximately 5 feet east of the single proportionate position intended in 1974. Removed the monument and placed it midway and on a straight line between adjacent section corners of record. Remarkd the top blaze on the 1974 NBTs and marked two new witness trees as described below.
 (F12) Found no evidence of monumentation at corner position. Established corner at the intersection of straight lines connecting opposite 1/4 corners of record. At the position for the corner, placed a 1"x32" painted iron pipe capped with a 4" dia. cast aluminum MDRR tablet.

C. Description of monument for corner and accessories established to perpetuate locating the position of the corner:
 (E11) 5/8" iron rod in monument box. N88W 36.05' West face of 6"x6"x6" post N88W 41.2' found nail in 5" dia. post with location poster. S79E 28.9' North end of 12" CMP Southerly, 2701.35', 5/8" iron pin at the 1/4 corner common to sections 32-33.
 (F13) 1" pipe with 4" aluminum cap. Blazed, scribed, and set measuring nails in the following new bearing trees: 12" Maple N25W 13.15' 10" Maple N51E 9.9' Set measuring nails in the 1974 NBTs: 10" Maple S75E 40.55' 12" Maple S09W 29.55' Placed fence line adjacent to the monument.
 (F12) 1" pipe with 4" aluminum cap. Blazed, scribed, and set measuring nails in the following bearing trees: 12" Y. Birch S34W 14.8' 5" Maple N21E 10.65' 10" Beech N30E 17.45' 4" Beech S30E 28.9' Placed squared post adjacent to the monument. Placed location poster on tree approx. 1359' east of the monument at a NE-SW road grade.

Signed by Stephan J. Szyszkoski
 Surveyor's Michigan License No. 33986

