

LAND CORNER RECORDATION CERTIFICATE
Filing Requirement of Act 74, Mich. P.A. 1970

For corners in

Mackinac
 (County)

Located In:

Corner Code #

1. Public Land Survey	T <u>42N</u> R <u>11W</u>	<u>F8</u>
	T _____ R _____	_____
	T _____ R _____	_____
	T _____ R _____	_____
2. Property Controlling in Section	S <u>21</u> T <u>42N</u> R <u>11W</u>	<u>11</u>
	S _____ T _____ R _____	_____
3. Miscellaneous Property in Sec.	S _____ T _____ R _____	_____
	S _____ T _____ R _____	_____

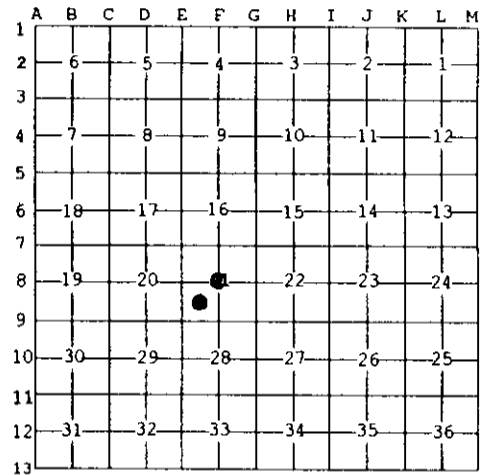
Register of Deeds Stamp & File Number

4. Lot No. _____, Recorded Plat _____
 5. Private Claims _____

Nov 29 2004

I, Stephan J. Szyszkoski, in a field survey on _____, 19____ do hereby state that under requirements of P.A. 74, Michigan P.A. of 1970, the corner points mentioned in lines 1 and 2 above were in conformance with regulations and rules therefore as required in the current manual of survey instructions of the United States Department of the Interior, Bureau of Land Management or by a decree of a Court of Law and /or that the corner points mentioned in lines 3, 4 and 5 above were in conformance with the rules of the Michigan Board of Land Surveyors or by a Decree of a Court of Law; established, re-established, monumented, recovered, found as expressed below:

NOTE: Not more than 2 corners, all in the same town and range, may be recorded on this certificate.



A. Description of original monument and accessories and/or subsequent restoration:
 (F8) Center of Section 21. Not established in the original survey.
 (11-Sec. 21) Southwest 1/16 corner, Sec. 21. Not established in the original survey.

B. Description of corner evidence found and/or method applied in restoring or reestablishing corner:
 (F8) Established the corner at the intersection of straight lines connecting opposite Quarter corners.
 (11-Sec. 21) Established the corner at the intersection of straight lines connecting opposite 1/16 corners.

C. Description of monument for corner and accessories established to perpetuate locating the position of the corner:

(F8) Set 1" IDx36" I.pipe with 4" alum. MDNR cap. Set measuring nails in: twin 12" Maple N31W 9.25' mrdk "CS BT" 10" Maple N10E 8.9' do 12" Cedar S65E 38.8' do 10" Maple S23W 14.7' do Set cedar post adjacent. Bearings are magnetic. Distances are to nail with tag.

(11) Set a chiseled "+" on a limestone boulder at ground level. Set measuring nails in: 5" Balsam N61E 14.75' mrdk "SW1/16 BT" 8" Balsam S45E 12.45' do 5" Maple South 0.8' do 6" Balsam N77E 11.1' do Cedar post adjacent. Bearings are magnetic. Distances are to nail with tag.



Stephan J. Szyszkoski
 Date 12/7/04

Signed by *Stephan J. Szyszkoski*
 Surveyor's Michigan License No. 33986