

LAND CORNER RECORDATION CERTIFICATE
Filing Requirement of Act 74, Mich. P.A. 1970

For corners in

| | | |
|------------------------------------|---|---------------|
| <u>Mackinac</u> | Located In: | Corner Code # |
| (County) | | |
| 1. Public Land Survey | T <u>42N</u> R <u>11W</u> | <u>F9</u> |
| | T <u>42N</u> R <u>11W</u> | <u>E8</u> |
| | T <u> </u> R <u> </u> | <u> </u> |
| | T <u> </u> R <u> </u> | <u> </u> |
| 2. Property Controlling in Section | S <u> </u> T <u> </u> R <u> </u> | <u> </u> |
| | S <u> </u> T <u> </u> R <u> </u> | <u> </u> |
| 3. Miscellaneous Property in Sec. | S <u> </u> T <u> </u> R <u> </u> | <u> </u> |
| | S <u> </u> T <u> </u> R <u> </u> | <u> </u> |

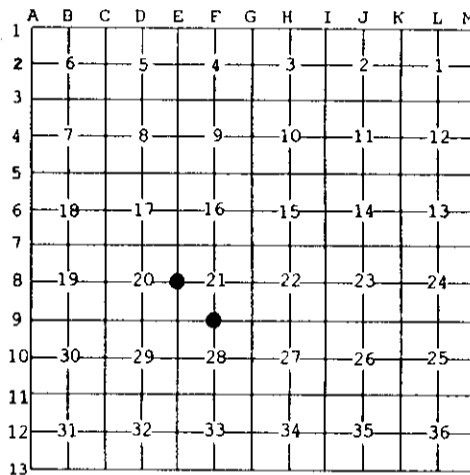
Register of Deeds Stamp & File Number

4. Lot No. _____, Recorded Plat _____
 5. Private Claims _____

Nov 23 2004

I, Stephan J. Szyszkoski, in a field survey on _____, 19____ do hereby state that under requirements of P.A. 74, Michigan P.A. of 1970, the corner points mentioned in lines 1 and 2 above were in conformance with regulations and rules therefore as required in the current manual of survey instructions of the United States Department of the Interior, Bureau of Land Management or by a decree of a Court of Law and /or that the corner points mentioned in lines 3, 4 and 5 above were in conformance with the rules of the Michigan Board of Land Surveyors or by a Decree of a Court of Law; established, re-established, monumented, recovered, found as expressed below:

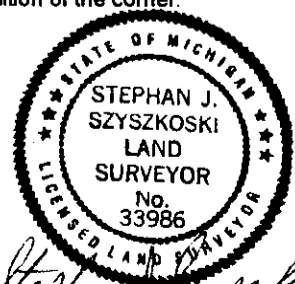
NOTE: Not more than 2 corners, all in the same town and range, may be recorded on this certificate.



A. Description of original monument and accessories and/or subsequent restoration:
 (F9) Quarter corner common to Sections 21-28. 1850 - Established by Mm.Ives, Deputy Surveyor: [west] Corrected between Sections 21 and 28 ...40.08 Set quarter section post. Fir 6 N2W 20 links, Fir 12 S31W 16 links. ...80.16 Section corner.
 (E8) Quarter corner common to Sections 20-21. 1850 - Established by Mm.Ives, Deputy Surveyor: N26'E Corrected between Sections 20&21 ...40.33 Set quarter section post. Sugar 18 S45E 36 links, Sugar 14 N85W 20 links. ...80.66 Section corner. Found no subsequent record.

B. Description of corner evidence found and/or method applied in restoring or reestablishing corner:
 (F9) The original post and accessories were not recovered. Reestablished the corner at the proportionate position, midway and on the Section line between Section corners 2671.67' east and west. From the position thus established, the center of a meandering E-W road is 18' north.
 (E8) The original post and accessories have been destroyed by road construction. Reestablished the corner at the proportionate position, midway and on a line between Section corners 2678.27' north and south. The corner falls in the center of South Gould City Road.

C. Description of monument for corner and accessories established to perpetuate locating the position of the corner:
 (F9) Set 1"IDx36" I.pipe with 4" alum. MDNR cap. Set measuring nails in:
 5" Beech N81E 26.8' mrkd "1/4S NBT"
 10" Maple S20E 6.15' do
 20" Maple N32E 9.0' do
 10" Maple N54W 49.1' do
 Set cedar post adjacent. Bearings are magnetic. Distances are to nail with tag.
 (E8) Set 5/8"x24" rebar with plastic cap "MICH DNR PS33986" driven flush with the asphalt surface. Set measuring nails in:
 14" Maple N38W 85.7' mrkd "1/4S NBT"
 12" Maple N75E 35.35' do
 12" Maple S70E 34.8' do
 Power pole EN4 177 74, S64W 43.4'
 1/2" rebar, not of record, North 42.45'
 Bearings are magnetic.



Stephan J. Szyszkoski
 Date 12/7/04

Signed by Stephan J. Szyszkoski
 Surveyor's Michigan License No. 33986