

MICHIGAN
DEPARTMENT OF CONSERVATION
FORESTRY DIVISION

LAND CORNER RECORD

T. 42 N.R. 12 W

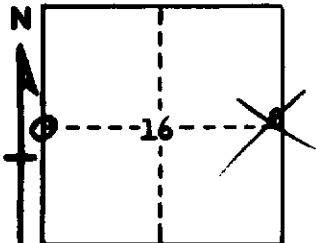
Mackinac COUNTY

DESCRIPTION OF CORNER 1/2 Cor. bet. Secs. 16-17.

CORNER MONUMENT 1" Pipe with 4" Aluminum Cap.

DATE MONUMENT PLACED AND WITNESSED 11-19-69

WITNESSES TO CORNER..... 10" Cedar (1/2 S NBT) S72°W 17.0'



AND

10" Cedar (1/2 S NBT) N28°E 19.6'

CIRCLE CORNER REGISTERED

DESCRIPTION IN DETAIL AS TO HOW CORNER WAS LOCATED AND IDENTIFIED OR RESTORED.

This corner replaced from two Cedar Bits; a stump with part of lower face and scribe marks in place, in poor condition, bearing S45°W, 11 Links and a stump in poor condition, no marks in evidence, bearing N46°E, 14 Links. Both stumps check well for size, species, bearing and distance.

SURVEYOR'S SEAL

SIGNED Billy E. Buckler
Billy E. Buckler
REGISTERED LAND SURVEYOR DATE 1-12-70