

**LAND CORNER RECORDATION CERTIFICATE**  
**Filing Requirement of Act 74, Mich. P.A. 1970**

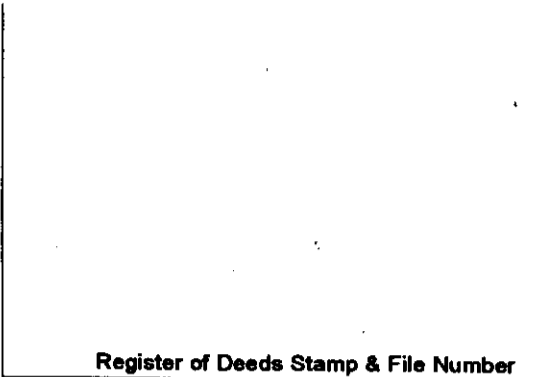
For corners in

Mackinac  
 (County)

Located In:

Corner Code #

1. Public Land Survey	T 42N R 12W	D11
	T 42N R 12W	C10
	T R	
	T R	
2. Property Controlling in Section	S T R	
	S T R	
3. Miscellaneous Property in Sec.	S T R	
	S T R	

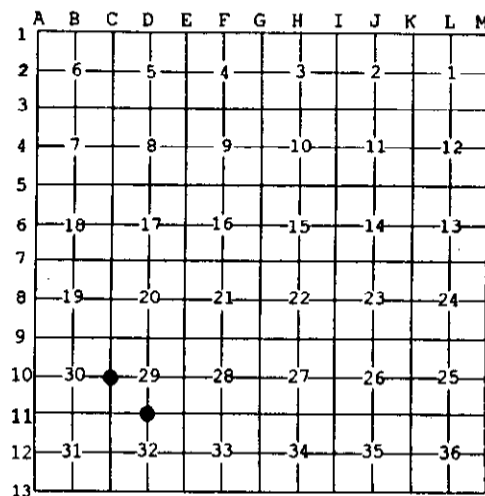


4. Lot No. \_\_\_\_\_, Recorded Plat \_\_\_\_\_  
 5. Private Claims \_\_\_\_\_

C10 Apr 30 2002  
 D11 May 01 2002

I, Stephan J. Szyszkoski, in a field survey on \_\_\_\_\_, 20\_\_\_\_ do hereby state that under requirements of P.A. 74, Michigan P.A. of 1970, the corner points mentioned in lines 1 and 2 above were in conformance with regulations and rules therefore as required in the current manual of survey instructions of the United States Department of the Interior, Bureau of Land Management or by a decree of a Court of Law and /or that the corner points mentioned in lines 3, 4 and 5 above were in conformance with the rules of the Michigan Board of Land Surveyors or by a Decree of a Court of Law; established, re-established, monumented, recovered, found as expressed below:

NOTE: Not more than 2 corners, all in the same town and range, may be recorded on this certificate.



**A. Description of original monument and accessories and/or subsequent restoration:**

(D11) Quarter corner common to Sections 29-32. 1959 record of Billy D. Buckler RLS: This corner was reestablished midway and on line between two Section Corners. No evidence of original corner. Corner was placed and witnessed September 18, 1959 with Frank Gray. 1" pipe with 4" brass cap. 8" Beech S42E 55 links, 6" Twin Cedar S25W 83.5 links.  
 (C10) Quarter corner common to Sections 29-30. 1849: Established by Guy H. Carleton: North between 29 and 30...40.00 Set post for 1/4 section corner. Sugar 20 N70W 15 lks, Sugar 14 S61E 20 lks....80.00 set post for corner to sections 19-20-29-30.

**B. Description of corner evidence found and/or method applied in restoring or reestablishing corner:**

(D11) The 1959 monument was not recovered. Found an old squared and scribed cedar post at substantial record bearing and distance from the remaining NBT twin Cedars and 3.6' east of the position of record. The Beech NBT is gone. Reestablished the corner midway and on a line of mean true bearing between Section corners of record 2642.76' east and west.  
 (C10) The original post and accessories were not recovered. Found no evidence of the position of the original corner on the ground. Reestablished the corner midway and on a line of mean true bearing between Section corners of record 2645.76' north and south.

**C. Description of monument for corner and accessories established to perpetuate locating the position of the corner:**

(D11) Set 1"IDx36" I.pipe with 4" alum. MDNR cap. Blazed, scribed, and set measuring nails in: 12" twin Cedar S22W 54.15'    "1/4S" 12" Maple S59E 14.3'        "1/4S NBT" 10" Balsam N77E 30.9'        do 12" Maple S41W 66.1'        do Bearings are magnetic. Distances are to nail with tag.	(C10) Set 1"IDx36" I.pipe with 4" alum. MDNR cap. Blazed, scribed, and set measuring nails in: 12" Maple N45E 6.0'        "1/4S NBT" 10" W.Birch S46E 43.85'    do 8" Maple S03E 14.2'        do 12" Beech S31W 39.9'        do Set cedar post adjacent. Bearings are magnetic. Distances are to nail with tag.
---	--



Signed by Stephan J. Szyszkoski  
 Surveyor's Michigan License No. 33986

Date 8/13/02