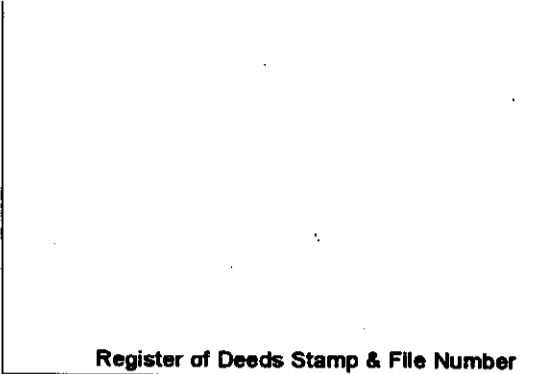


LAND CORNER RECORDATION CERTIFICATE
Filing Requirement of Act 74, Mich. P.A. 1970

For corners in

<u>Mackinac</u>	Located In:	Corner Code #
(County)		
1. Public Land Survey	T <u>42N</u> R <u>12W</u>	<u>D9</u>
	T <u>42N</u> R <u>12W</u>	<u>E10</u>
	T _____ R _____	_____
	T _____ R _____	_____
2. Property Controlling in Section	S _____ T _____ R _____	_____
	S _____ T _____ R _____	_____
3. Miscellaneous Property in Sec.	S _____ T _____ R _____	_____
	S _____ T _____ R _____	_____

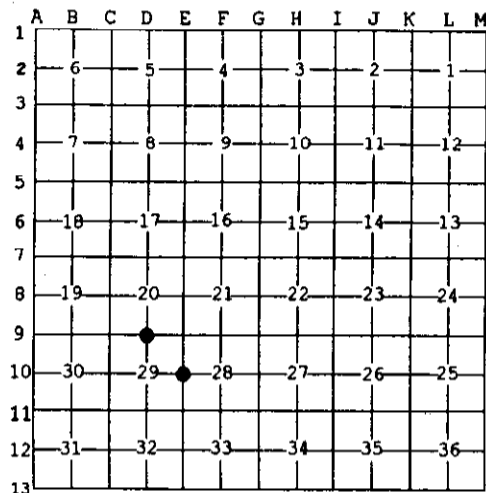


4. Lot No. _____, Recorded Plat _____
 5. Private Claims _____

E10 Apr 30 2002
 D9 May 08 2002

I, Stephan J. Szyszkoski, in a field survey on _____, 20____ do hereby state that under requirements of P.A. 74, Michigan P.A. of 1970, the corner points mentioned in lines 1 and 2 above were in conformance with regulations and rules therefore as required in the current manual of survey instructions of the United States Department of the Interior, Bureau of Land Management or by a decree of a Court of Law and/or that the corner points mentioned in lines 3, 4 and 5 above were in conformance with the rules of the Michigan Board of Land Surveyors or by a Decree of a Court of Law, established, re-established, monumented, recovered, found as expressed below:

NOTE: Not more than 2 corners, all in the same town and range, may be recorded on this certificate.



A. Description of original monument and accessories and/or subsequent restoration:
 (D9) Quarter corner common to Sections 20-29. 1849: Established by Guy H. Carleton: West corrected between Sections 20 & 29...39.60 Set post for 1/4 section corner. Yellow Birch 14 S52E 09 lks, Sugar 20 N55W 37 lks...79.20 Section corner. 1964: Record of Billy D. Buckler RLS: This corner was reestablished midway and on line between two Section Corners. Found no evidence of Original corner. 1" pipe with 4" aluminum cap. 10" Balsam S21E 31 links, 12" W.Spruce N28W 21 links.
 (E10) Quarter corner common to Sections 28-29. 1962: Record of Billy D. Buckler RLS: This corner was reestablished midway and on line between two Section corners. No evidence of original corner. 1" pipe with 4" brass cap. 9" Cedar N25W 13.5 links, 5" Cedar S60W 26.5 links.

B. Description of corner evidence found and/or method applied in restoring or reestablishing corner:
 (D9) The original post and accessories were not recovered. Recovered the 1964 monument, as described, in good condition, at record bearing and distance from the record accessories, S64W 113' distant from the position of record. Removed the 1964 monument and placed it midway and on a line of mean true bearing between Section corners of record 2613.47' east and west. Defaced the 1964 witness trees.
 (E10) Recovered the 1962 monument in good condition and at record bearing and distance from the 1962 witnesses, both in place. The cedar SW has a broken top and rotting center. Measured to Section corners north and south: 2648.51' and 2646.34', respectively. The monument is 0.2' west of a line between them. Accepted the monument as a careful and faithful reestablishment of the position of the original corner.

C. Description of monument for corner and accessories established to perpetuate locating the position of the corner:
 (D9) Set 1"IDx36" I.pipe with 4" alum. MDNR cap (the 1964 monument). Blazed, scribed, and set measuring nails in:
 6" Balsam S32E 9.75' "1/4S NBT"
 4" Balsam S50W 4.5' do
 6" Balsam N20E 10.7' do
 5" Balsam N85E 7.85' do
 Set squared cedar post adjacent. Bearings are magnetic. Distances are to nail with tag.
 (E10) Found 1"ID I.pipe with 4" alum. MI Dept. of Conservation cap. Blazed, scribed, and set measuring nails in:
 18" Cedar (1962 wit) N20W 8.55' "1/4S"
 12" Maple N55E 16.9' "1/4S NBT"
 14" Maple S45E 14.1' do
 12" Maple N12E 33.4' do
 Bearings are magnetic. Distances are to nail with tag.



Signed by Stephan J. Szyszkoski
 Surveyor's Michigan License No. 33986

Date 8/13/02