

LAND CORNER RECORDATION CERTIFICATE
Filing Requirement of Act 74, Mich. P.A. 1970

For corners in
Mackinac

(County)

Located In:

Corner Code #

1. Public Land Survey	T	42N	R	12W	C6
	T	42N	R	12W	C5
	T		R		
	T		R		
2. Property Controlling in Section	S		T	R	
	S		T	R	
3. Miscellaneous	S		T	R	
Property in Sec.	S		T	R	

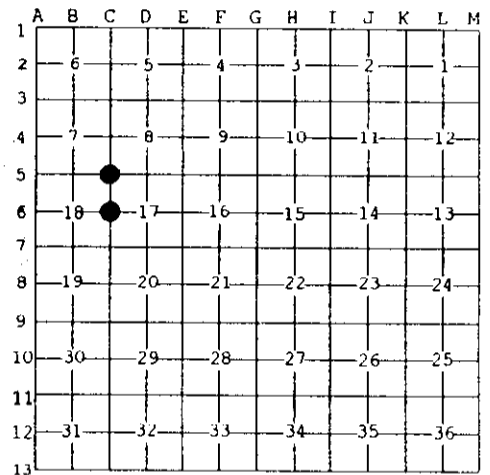
Register of Deeds Stamp & File Number

4. Lot No. _____, Recorded Plat _____
 5. Private Claims _____

C5 May 10 2004
 C6 Jun 30 2004

I, Stephan J. Szyszkoski, in a field survey on _____, 19____ do hereby state that under requirements of P.A. 74, Michigan P.A. of 1970, the corner points mentioned in lines 1 and 2 above were in conformance with regulations and rules therefore as required in the current manual of survey instructions of the United States Department of the Interior, Bureau of Land Management or by a decree of a Court of Law and /or that the corner points mentioned in lines 3, 4 and 5 above were in conformance with the rules of the Michigan Board of Land Surveyors or by a Decree of a Court of Law; established, re-established, monumented, recovered, found as expressed below.

NOTE: Not more than 2 corners, all in the same town and range, may be recorded on this certificate.



A. Description of original monument and accessories and/or subsequent restoration:
 (C6) Quarter corner common to Sections 17-18. 1969: Billy D. Buckler, RLS reestablished the corner midway and on line between Section corners. Set 1" iron pipe with 4" aluminum cap. 1985: the 1969 monument was recovered by G.L. Wiggins, RLS and witnessed with: 10" Cedar N44W 155.9', 12" Cedar N29W 166.3', 8" B.Ash N22W 125.4', 6" B.Ash S14E 23.3'.
 (C5) Corner common to Sections 7-8-17-18. 1969: Corner replaced by Billy D. Buckler, RLS from an original Cedar witness N87E 34 links. Set 1" pipe with 4" aluminum cap. 14" Soft Maple S40W 6.7', 12" Cedar N65W 17.6', 5" Cedar N87E 6.0'.

B. Description of corner evidence found and/or method applied in restoring or reestablishing corner:

(C6) Recovered but did not accept the 1969 monument. I discovered that Mr. Buckler had made an arithmetic error in his 1969 calculations which led him to believe that the corner 1/2 mile north of this position, C5, was 100 feet further west than it actually was on the ground. Consequently, his proportionate position for this corner is erroneous. I reestablished the corner by single proportionate measurement to the original record between Section corners 2687.61' North and South. Removed the 1969 monument and destroyed the 1985 witness trees. The position for the corner falls in an 8" Balsam.
 (C5) The 1969 monument was not recovered. Monumented the corner at record bearing and distance from the 1969 witnesses. The Soft Maple and Cedar NE are in good condition. The Cedar NW is standing dead.

C. Description of monument for corner and accessories established to perpetuate locating the position of the corner:

(C6) Set 5/8"x30" rebar, driven into an 8" Balsam stump cut 10" above ground, capped with a plas. cap stamped "MICH DNR PS 33986". Blazed, scribed, and set meas. nails in:	(C5) Set 1" IDx36" I. pipe with 4" alum. MONR cap. Blazed, scribed, and set measuring nails in:
5" Balsam S64W 2.25' "1/4S N8T"	8" Cedar N77W 12.2' "S7 N8T"
6" Balsam N61W 1.8' do	10" Cedar N28W 47.65' "S7 N8T"
8" Balsam N78E 8.05' do	20" Maple S40W 7.75' old blazes *
14" Spruce S52E 24.25' do	8" Cedar N82E 6.7' "S8" *
Bearings are magnetic.	Bearings are magnetic. Distances are to nail with tag. * denotes 1969 N8T.



Signed by Stephan J. Szyszkoski
 Surveyor's Michigan License No. 33986

Date 7/7/04