

**SURVEY & REMONUMENTATION**

**MAR 13 1998**

1997 Mackinac County Remonumentation Corner  
**LAND CORNER RECORDATION CERTIFICATE**  
 Filing Requirement of Act 74, Mich. P.A. 1970

For corners in **SECTION**

<u>Mackinac</u> (County)	Located In:	Corner Code #
1. Public Land Survey	T <u>43N</u> R <u>1W</u>	<u>H-5</u>
	T _____ R _____	_____
	T _____ R _____	_____
	T _____ R _____	_____
2. Property Controlling in Section	S _____ T _____ R _____	_____
	S _____ T _____ R _____	_____
3. Miscellaneous Property in Sec.	S _____ T _____ R _____	_____
	S _____ T _____ R _____	_____

**RECEIVED & FILED**  
 DIANE FRAL ROYCH  
 MACKINAC COUNTY CLERK OF DEEDS

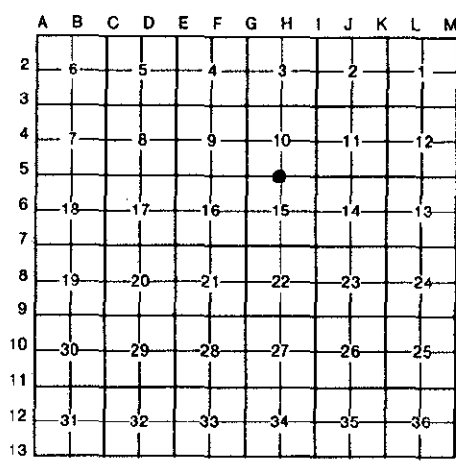
**DEC 18 1997**

AM \_\_\_\_\_ PM \_\_\_\_\_

7|8|9|10|11|12|13|14|15|16

**Register of Deeds Stamp & File Number**

4. Lot No. \_\_\_\_\_, Recorded Plat \_\_\_\_\_
5. Private Claims \_\_\_\_\_



I, David B. Guthrie, in a field survey on September 23, 19 97, do hereby certify that under requirements of P.A. 74, Michigan P.A. of 1970, the corner points mentioned in lines 1 and 2 above were in conformance with regulations and rules therefore as required in the current manual of survey instructions of the United States Department of the Interior, Bureau of Land Management or by a decree of a Court of Law and/or that the corner points mentioned in lines 3, 4 and 5 above were in conformance with the rules of the Michigan Board of Land Surveyors or by a Decree of a Court of Law; established, re-established, monumented, re-monumented, recovered, found as expressed below:

**NOTE: Not more than 4 corners, all in the same town and range, may be recorded on this certificate.**

A. Description of original monument and accessories and/or subsequent restoration:  
 1845: G.L.O. Survey by J.H. Mullett - Set Post and Referenced - a Cedar 4" in diameter for 1/4 corner.

ACCEPTED BY THE MACKINAC COUNTY SURVEY PEER GROUP AS THE OFFICIAL CORNER UNDER P.A. 345 OF 1990 AT A MEETING HELD ON 11-21-97

B. Description of corner evidence found and/or method applied in restoring or reestablishing corner:  
 1997: Remonumentation Survey by R.S. Scott Associates, Inc.  
 Found 1/2" Iron Rod in a Monument Box at the intersection of the E-W road and a fenceline North.  
 Referenced -  
 (Exist.) S37°E - 10" Tamarack - 43.61'  
 (Exist.) S18°W - 10" Tamarack - 34.45'  
 N63°W - 12" Aspen - 82.69'  
 N13°W - 12" Aspen - 43.03'  
 This corner position is compatible with County and local surveys. This corner position is accepted as a careful and faithful perpetuation of the position of the original corner.

C. Description of monument for corner and accessories established to perpetuate locating the position of the corner:  
 1997: Placed 3" Mackinac County Cap stamped to identify the corner over 1/2" Iron Rod in Monument Box.  
 Referenced -  
 S37°E - 10" Tamarack - 43.61'  
 S18°W - 10" Tamarack - 34.45'  
 N63°W - 12" Aspen - 82.69'  
 N13°W - 12" Aspen - 43.03'



Signed by David B. Guthrie Date 12-12-97  
 Surveyor's Michigan License No. 22435