

MICHIGAN  
DEPARTMENT OF CONSERVATION  
FORESTRY DIVISION

# LAND CORNER RECORD

T. 43 N.R. 6 & 7 W

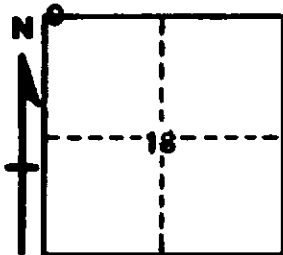
Mackinac COUNTY

DESCRIPTION OF CORNER Section Corner for Sections R7W  $\frac{12}{7}$  T43N R6W  $\frac{13}{18}$  T43N

CORNER MONUMENT 1" Iron Pipe with 4" Aluminum Cap

DATE MONUMENT PLACED AND WITNESSED 6/2/66, Frank J. Bray and R. Lane

WITNESSES TO CORNER..... 9" W. Birch (S18)(NBT) S 86° E, 96 Links



12" W. Birch (S12)(NBT) N 37° W, 14 Links

9" W. Pine (S7)(NBT) N 26° E, 129½ Links

AND

CIRCLE CORNER REGISTERED

DESCRIPTION IN DETAIL AS TO HOW CORNER WAS LOCATED AND IDENTIFIED OR RESTORED.

This corner was set at 1½" Iron Pipe which checks well for being on Line and proper distance with corners to North and South. Pipe may have been set by Marcus Schaff R.L.S.

SURVEYOR'S SEAL

SIGNED Frank J. Bray DATE 7/18/67  
REGISTERED LAND SURVEYOR