

**LAND CORNER RECORDATION CERTIFICATE**  
**Filing Requirement of Act 74, Mich. P.A. 1970**

For corners in  
 Mackinac

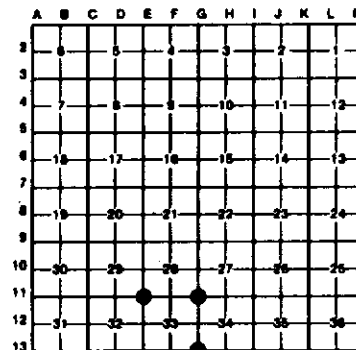
(County)	Located In:	Corner Code #/
1. Public Land Survey	T 43N R 7W	613
	T 43N R 7W	611
	T 43N R 7W	E11
	T _____ R _____	_____
	T _____ R _____	_____
2. Property Controlling in Section	S _____ T _____ R _____	_____
	S _____ T _____ R _____	_____
3. Miscellaneous Property in Sec.	S _____ T _____ R _____	_____
	S _____ T _____ R _____	_____

Register of Deeds Stamp & File Number

4. Lot No. \_\_\_\_\_, Recorded Plat \_\_\_\_\_  
 5. Private Claims \_\_\_\_\_

I, Stephan J. Szyszkoski, in a field survey on June 06, 1991, 19\_\_\_\_\_, do hereby certify that under requirements of P.A. 74, Michigan P.A. of 1970, the corner points mentioned in lines 1 and 2 above were in conformance with regulations and rules therefore as required in the current manual of survey instructions of the United States Department of the Interior, Bureau of Land Management or by a decree of a Court of Law and/or that the corner points mentioned in lines 3, 4 and 5 above were in conformance with the rules of the Michigan Board of Land Surveyors or by a Decree of a Court of Law; established, re-established, monumented, re-monumented, recovered, found as expressed below:

**NOTE: Not more than 4 corners, all in the same town and range, may be recorded on this certificate.**



**A. Description of original monument and accessories and/or subsequent restoration:**

(613) Corner previously recorded by Billy D. Buckler as reestablished by single proportionate measurement in 1962. Buckler's accessories: 5" R. Pine N22E 34 links, 7" Jack Pine N45W 47 links.  
 (611) Corner previously recorded by Billy D. Buckler as a 1" pipe with 4" aluminum cap placed in 1962 with accessories as follows: 12" Y. Birch N52W 14.5 links; 10" hard maple N47E 54 links.  
 (E11) Corner previously recorded by Billy D. Buckler as a 1" pipe with 4" brass cap placed in 1962 with accessories as follows: 5" R. Pine N12E 12.5 links, 5" R. Pine S20E 25 links, 7" R. Pine West 78.5 links.

**B. Description of corner evidence found and/or method applied in restoring or reestablishing corner:**

(613) Found and accepted 1" pipe with 4" brass cap placed by Buckler, and his record accessories agreeing. Reblazed top blaze on Buckler's witness trees and scribed two additional trees.  
 (611) Found and accepted 1" pipe with 4" aluminum cap placed by Buckler with his record accessories agreeing. rescribed new BH blaze on Buckler's Witness trees and marked two additional witness trees.  
 (E11) Found and accepted 1" pipe with 4" brass cap placed by Buckler with his record accessories agreeing. Reblazed BH blaze on Buckler's witness trees and blazed two additional trees. Placed a location poster on a wood post approximately 381' south of corner on trail road.

**C. Description of monument for corner and accessories established to perpetuate locating the position of the corner:**

(613) Found 1" pipe with 4" brass tablet. 12" R. Pine N22E 22.4'; 10" Jack Pine N45W 31.0'; 6" R. Pine N56E 36.0'; 10" Jack Pine, N12E 29.9'. Blazed and scribed new witness trees at base and BH.	(611) 1" pipe with 4" aluminum tablet. 14" Y. Birch N52W 9.6'; 12" H. Maple N47E 35.6'; 8" R. Pine N71W 10.8'; 10" R. Pine N68E 14.2'. New witness trees blazed and scribed at base and BH. Distances are to face of base blaze.	(E11) 1" pipe with 4" brass tablet. 12" R. Pine N12E 8.3'; 12" R. Pine S20E 16.5'; 14" R. Pine West 51.8'; 8" R. Pine N71W 10.8'; 10" R. Pine N68E 14.2'. Scribed new witness trees at base and BH. Distances are to face of base blaze.
--	--	--

Signed by

*Stephan J. Szyszkoski*

Date

3-16-92

Surveyor's Michigan License No.

33986



FORM APPROVED BY MICHIGAN BOARD OF LAND SURVEYORS, 1974  
 REVISED JAN., 1983