

**LAND CORNER RECORDATION CERTIFICATE**  
**Filing Requirement of Act 74, Mich. P.A. 1970**

For corners in  
Mackinac  
(County)

Located in:

Corner Code ≠

1. Public Land Survey	T	<u>43N</u>	R	<u>7W</u>	<u>E12</u>		
	T	<u>43N</u>	R	<u>7W</u>	<u>E13</u>		
	T		R				
	T		R				
2. Property Controlling in Section	S	<u>33</u>	T	<u>43N</u>	R	<u>7W</u>	<u>B</u>
	S		T		R		
3. Miscellaneous Property in Sec.	S		T		R		
	S		T		R		

Register of Deeds Stamp & File Number

4. Lot No. \_\_\_\_\_, Recorded Plat \_\_\_\_\_  
 5. Private Claims \_\_\_\_\_

E13 June 06, 1991

B March 02, 1992

I, Stephan J. Szyszkoski, in a field survey on E12 March 02, 1992, 19\_\_\_\_\_, do hereby certify that under requirements of P.A. 74, Michigan P.A. of 1970, the corner points mentioned in lines 1 and 2 above were in conformance with regulations and rules therefore as required in the current manual of survey instructions of the United States Department of the Interior, Bureau of Land Management or by a decree of a Court of Law and/or that the corner points mentioned in lines 3, 4 and 5 above were in conformance with the rules of the Michigan Board of Land Surveyors or by a Decree of a Court of Law, established, re-established, monumented, re-monumented, recovered, found as expressed below:

**NOTE: Not more than 4 corners, all in the same town and range, may be recorded on this certificate.**

**A. Description of original monument and accessories and/or subsequent restoration:**

(E12) Corner previously recorded by Billy D. Buckler as being reestablished and monumented in 1962 midway and on a straight line between section corners north and south.

(E13) Corner previously recorded by Billy D. Buckler as being placed and witnessed 9-25-1962 at an iron pipe set by Marcus Schaaf.

(B) West 1/16 corner Sec. 33. Corner not established in original survey. Previously recorded by Billy D. Buckler as being established and monumented in 1963 midway between 1/4 corner to west and Center of Section to east.

**B. Description of corner evidence found and/or method applied in restoring or reestablishing corner:**

(E12) Found and accepted 1" pipe with 4" aluminum tablet recorded by Buckler with his NBT Red Pine N38W agreeing. W. Pine NBT is gone.

(E12) Found and accepted 1" pipe with 4" brass cap recorded by Buckler. Buckler's 8" W. Pine is dead. Rescribed top blaze on his 6" W. Pine and marked three additional witness trees. Placed location tag on a wood post approximately 100' south of the corner at trail road.

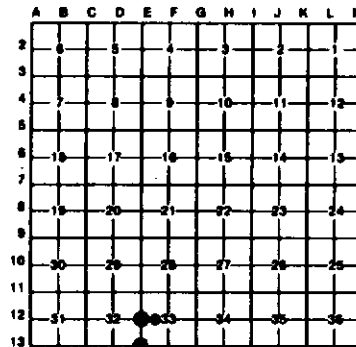
(B) Established the corner position equidistant and on a straight line between the monumented corners E12 and F12. Found Buckler's recorded monument and accessories at an erroneous location approximately 98 feet west of this position. Removed aluminum tablet from the erroneous monument and drove it flush with the ground. Monumented the corner position with a 1"x32" painted iron pipe capped with a 4" cast aluminum MBNR tablet.

**C. Description of monument for corner and accessories established to perpetuate locating the position of the corner:**

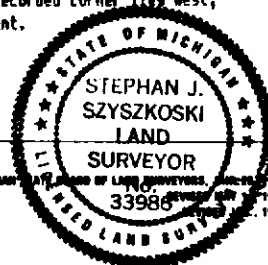
(E12) Found 1" pipe with aluminum tablet. N36W 26.5' set nail and tag in 13" R. Pine (rescribed BH blaze "W1/4"); N13W 29.35' nail and tag in 8" W. Pine; S33W 5.45' nail and tag in 7" balsam; West 33.95' nail and tag in 7" spruce. Blazed and scribed all at BH ("W1/4") and base ("NBT") except Buckler's NBT as noted.

(E12) Found 1" pipe with 4" brass cap. 10" W. Pine NS4E 38.97'; 16" W. Pine NB3W 50.1'; 6" balsam N17W 17.6'; 14" W. Pine east 19.9'. Blazed and scribed new witness trees at BH and base. Distances are to face of base blaze.

(B) Set 1"x32" pipe with aluminum tablet. S68E 2.74' nail and tag in 10" W. Pine; North 14.65' nail and tag in 16" W. Pine; NB6W 17.05' nail and tag in 9" W. Pine; S34W 23.20' nail and tag in 15" W. Pine. Blazed and scribed all above trees at BH ("W1/16") and base ("BT"). The previously recorded corner lies West, 98.42' distant.



Signed by Stephan J. Szyszkoski Date 3-16-92  
 Surveyor's Michigan License No. 33986



FORM APPROVED BY MICHIGAN BOARD OF LAND SURVEYORS, REG. NO. 1971  
 REVISED BY 1978  
 33986