

MICHIGAN
DEPARTMENT OF CONSERVATION
FORESTRY DIVISION

LAND CORNER RECORD

T. 43 N.R. 7 W

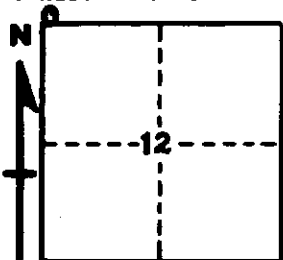
Mackinac COUNTY

DESCRIPTION OF CORNER Section corner for sections $\frac{2}{1}$
11/12

CORNER MONUMENT 1" Iron Pipe with 4" Aluminum Cap

DATE MONUMENT PLACED AND WITNESSED 5/23/66, Frank J. Bray

WITNESSES TO CORNER..... 6" S. Maple (SI)(NBT) N 47° E, 25 Links



4" S. Maple (NBT) S 45° E, 17½ Links

5" W. Birch (S2)(NBT) N 65° W, 15½ Links

AND

CIRCLE CORNER REGISTERED

DESCRIPTION IN DETAIL AS TO HOW CORNER WAS LOCATED AND IDENTIFIED OR RESTORED.

This corner was found by Marcus Schaff in 1939 with original evidence present at that time. Monument set from two W. Pine stumps which Schaff noted as NBT's in 1939.

SURVEYOR'S SEAL

SIGNED Frank J. Bray DATE 7/25/67
REGISTERED LAND SURVEYOR