

MICHIGAN
DEPARTMENT OF CONSERVATION
FORESTRY DIVISION



LAND CORNER RECORD

T. 43 N.R. 7 W

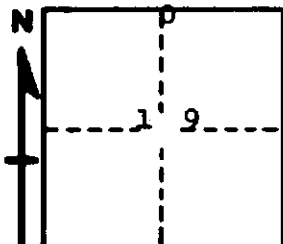
Mackinac COUNTY

DESCRIPTION OF CORNER 1/4 corner for sections $\frac{18}{19}$

CORNER MONUMENT 1" iron pipe with 4" aluminum cap

DATE MONUMENT PLACED AND WITNESSED 8/8/66 - F. J. Bray

WITNESSES TO CORNER..... 18" Cedar ($\frac{3}{8}$ S) (NBT) East, $4\frac{1}{2}$ links



14" Cedar ($\frac{3}{8}$ S) (NBT) S 80° W, $6\frac{3}{4}$ links

Blazed 6" balsam N 35° W, $12\frac{1}{2}$ links

AND

Blazed 10" balsam S 43° E, 26 links

CIRCLE CORNER REGISTERED

DESCRIPTION IN DETAIL AS TO HOW CORNER WAS LOCATED AND IDENTIFIED OR RESTORED.

This corner was placed in stream and with stream crossing as stated in field notes. Rotted hemlock to SE but no evidence of axe or iron marks. Checks well with proportioned distance east and west.

SURVEYOR'S SEAL

SIGNED Frank J. Bray DATE 7/19/67
REGISTERED LAND SURVEYOR

Frank J. Bray