

MICHIGAN
DEPARTMENT OF CONSERVATION
FORESTRY DIVISION

LAND CORNER RECORD

T. 43N N. R. 7 W

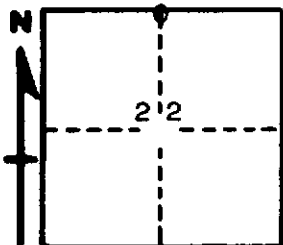
Mackinac COUNTY

DESCRIPTION OF CORNER 1/4 corner for sections $\frac{15}{22}$

CORNER MONUMENT 1" iron pipe with 4" aluminum cap

DATE MONUMENT PLACED AND WITNESSED 8/15/66 - F. J. Bray

WITNESSES TO CORNER..... 11" cedar ($\frac{3}{4}$ S) (NBT) S 55° W, 24 links



10" cedar ($\frac{3}{4}$ S) (NBT) N 22° E, 12½ links

AND

CIRCLE CORNER REGISTERED

DESCRIPTION IN DETAIL AS TO HOW CORNER WAS LOCATED AND IDENTIFIED OR RESTORED.

This corner was placed midway and on line between section corners $\frac{1}{2}$ miles to east and to west.

SURVEYOR'S SEAL

SIGNED Frank J. Bray DATE 7/19/67
REGISTERED LAND SURVEYOR
Frank J. Bray