

MICHIGAN
DEPARTMENT OF CONSERVATION
FORESTRY DIVISION

LAND CORNER RECORD

T. 43 N.R. 7

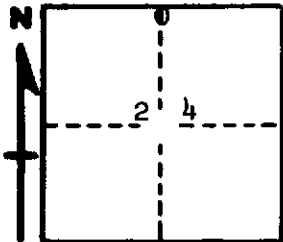
Mackinac COUNTY

DESCRIPTION OF CORNER 1/4 corner for sections $\frac{13}{24}$

CORNER MONUMENT 1" iron pipe with 4" aluminum cap

DATE MONUMENT PLACED AND WITNESSED 8/12/66 - F. J. Bray, A. Klawiter and R. Lane

WITNESSES TO CORNER..... 7" cedar ($\frac{1}{2}$ S) (NBT) S 40° W, 07 links



10" cedar ($\frac{1}{2}$ S) (NBT) N 73° W, 03 links

AND

CIRCLE CORNER REGISTERED

DESCRIPTION IN DETAIL AS TO HOW CORNER WAS LOCATED AND IDENTIFIED OR RESTORED.

This corner was placed midway and on line between section corners $\frac{1}{2}$ mile to east and to west.

SURVEYOR'S SEAL

SIGNED Frank J. Bray DATE 7/19/67
REGISTERED LAND SURVEYOR

Frank J. Bray