

MICHIGAN
DEPARTMENT OF CONSERVATION
FORESTRY DIVISION

LAND CORNER RECORD

T. 43 N.R. 7 W

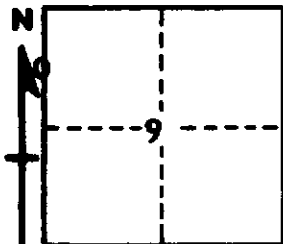
Mackinac COUNTY

DESCRIPTION OF CORNER Witness corner to meander corner for sections 8/9

CORNER MONUMENT 1" Iron Pipe with 4" Aluminum Cap

DATE MONUMENT PLACED AND WITNESSED 5/24/67, Frank J. Bray

WITNESSES TO CORNER..... 17" Hemlock (W.G.) (BT) N 21° E, 20½ Links



28" W. Pine (BT) S 76° W, 30 Links

AND

CIRCLE CORNER REGISTERED

DESCRIPTION IN DETAIL AS TO HOW CORNER WAS LOCATED AND IDENTIFIED OR RESTORED.

This corner was placed on line and 1.25½ chs South of where meander corner would be set in lake by single proportioned measurement between section corner to South and where section corner in lake to North would be set by double proportioned measurement.

SURVEYOR'S SEAL

SIGNED Frank J. Bray DATE 8/2/67
Frank J. Bray
REGISTERED LAND SURVEYOR