

MICHIGAN
DEPARTMENT OF CONSERVATION
FORESTRY DIVISION

LAND CORNER RECORD

T. T's 43 & 44 N. R. R's 7 & 8 W

Mackinac

COUNTY

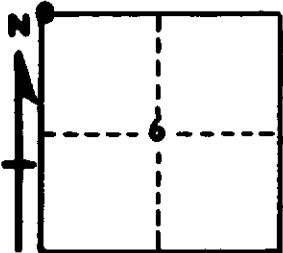
T44N R8W 36/31 T44N R7W

DESCRIPTION OF CORNER Section Corner for Sections T43N R8W 1/6 T43N R7W

CORNER MONUMENT 1" Iron Pipe & Aluminum Cap set in 2" Iron Pipe

DATE MONUMENT PLACED AND WITNESSED 7/29/66 F. J. Bray, A. Klawiter, W. Alatalo & R. Lane

WITNESSES TO CORNER..... 7" H. Maple (S36) (NBT) N33°W, 91½ Links



Corner Power Pole N 38° E, 56½ Links

11" S. Maple (S36) (NBT) N 07° W, 10¼ Links

AND

CIRCLE CORNER REGISTERED

DESCRIPTION IN DETAIL AS TO HOW CORNER WAS LOCATED AND IDENTIFIED OR RESTORED.

This corner was placed in 2" Iron Pipe which was found by Retracing Survey made for Lots in Town of Rexton. Old wood post down near pipe. Checks well with Marsh edges to North South and West.

SURVEYOR'S SEAL

SIGNED Frank J. Bray DATE 7/18/67
REGISTERED LAND SURVEYOR