

MICHIGAN  
DEPARTMENT OF CONSERVATION  
FORESTRY DIVISION

# LAND CORNER RECORD

T. 43 N.R. 7 W.

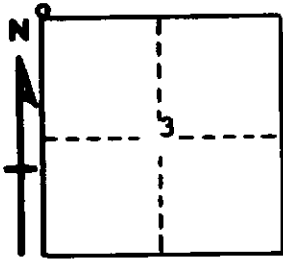
Mackinac COUNTY

DESCRIPTION OF CORNER Closing Corner between Sections 3-4 on North Boundary of Township

CORNER MONUMENT 1/2" x 14" Iron Bar buried on South edge of E-W Road

DATE MONUMENT PLACED AND WITNESSED 9/25/63

WITNESSES TO CORNER..... Iron Fence Post S. 45<sup>o</sup> E., 74½ Lks.



CIRCLE CORNER REGISTERED

AND

DESCRIPTION IN DETAIL AS TO HOW CORNER WAS LOCATED AND IDENTIFIED OR RESTORED.

This Corner was placed 46 Links West of Section Corner between 33-34, T. 44 N., R. 7 W.

Corner lies 36 Lks. West of Road <sup>C</sup><sub>1</sub> to South.

SURVEYOR'S SEAL

SIGNED Billy D. Buckler DATE 1/27/64  
REGISTERED LAND SURVEYOR